

THE COLOR ISSUE

jewelry stringing

MAKING JEWELRY, BEAD BY BEAD

FROM THE PUBLISHERS OF
BEADWORK

All about
COLOR!

The Ultimate Guide to
Hue * Value * Saturation

Modern Talismans

6 Designs for
Good Fortune

Secrets for Success

USE PINTEREST
TO BOOST YOUR
SALES p. 80

Now in Every Issue!

- * Mixed-Media Designs p. 45
- * Spotlight on Leather p. 44

ESSENTIAL
**Spring
Trends**
SUGARY HUES &
GARDEN FLORALS



SPRING 2016



Ravenna
by
Cynthia Kimura



featuring
Artbeads
Designer Blends

Artbeads.com[®]

FREE SHIPPING // FREE RETURNS

Lima Beads
Fresh beads. Happy beaders.

Come Explore with Us!

See the latest & greatest jewelry components from around the world at Lima Beads.



LimaBeads.com/Explore



moon gazing
BY LORALEE KOLTON
PAGE 33



frosted honeysuckle
BY ANNE PERRY
PAGE 20

ON THE COVER



ROSE BLUSH
BY CANDIE COOPER
PAGE 28

project features

SUGAR COATED

- 15 *Sweet Talk* MEGAN LENHAUSEN
- 16 *Peaches & Cream* GAEA CANNADAY
- 17 *Don't Ever Leaf Me* LORELEI EURTO
- 18 *Sprinkles on Top* LAURENN STIPES
- 18 *Rosary Trio* ROXANNE MENDOZA
- 19 *Sweet Rosette* ANNE PERRY
- 20 *Frosted Honeysuckle* ANNE PERRY
- 21 GET THE LOOK

THE SECRET GARDEN

- 25 *The Tortoise & the Orchid* MARTHA THOMAS
- 26 *Rock Candy* KARLIN JONES
- 27 *Floral Meadow* ANNE PERRY
- 28 *Rose Blush* CANDIE COOPER
- 29 *Key to the Garden* TERRY RICOLI
- 30 *Lilac Patch* REJETTA SELLERS
- 31 *Little Birdies* MARTHA THOMAS
- 32 GET THE LOOK

CONTEMPORARY TALISMAN

- 33 *Moon Gazing* LORALEE KOLTON
- 34 *Maker of Dreams* LISA MARIE BALDOCK
- 35 *Perched in the Soul* CLAIRE LOCKWOOD
- 36 *Eye of the Beholder* LORELEI EURTO
- 37 *In Good Hands* KRISTINA HAHN ELENIK
- 38 *Telesma* SAMANTHA SLATER
- 39 *Tranquility* REJETTA SELLERS
- 40 *Sacred Spaces* ANNE PERRY
- 41 GET THE LOOK

MIXED MEDIA

- 45 *Field Notes* SHARON BORSAVAGE
- 46 *Dewberry Brooch* BETH SHEA
- 47 *From the Heart* KRISTINA HAHN ELENIK
- 47 *Daisy Blue* REJETTA SELLERS
- 48 *Gadgets and Gears* KAYE KRAUS
- 49 *Happy Go Lucky* ERIN STROTHER
- 50 *Jazz June* ANNE POTTER
- 51 *Vintage Victorian Cuff* CAROL SPINSKI
- 52 GET THE LOOK



floral meadow
BY ANNE PERRY
PAGE 27



from the heart
BY KRISTINA HAHN ELENIK

daisy blue
BY REJETTA SELLERS
PAGE 47

feature

7 COLOR CLASS:
Hue, Value, & Saturation

departments

- 4 Simply Strung
- 14 Bead Beat
- 24 Beading on a Shoestring
- 42 19 Bracelet Designs!
- NEW!** 44 Leather Style
- 54 24 Earring Designs!
- 77 Stringing 101
- 80 Sell & Tell



19 bracelet designs
PAGE 42



24 earring designs
PAGE 54





Spring Is in Bloom

What is it about spring that seems to refresh our spirits? I'm convinced it's the sights and smells of blossoming trees, of colorful blooms making their way through the once-frozen soil. It's such a joy for us to put together the spring issue—our annual "color" issue—during the cold, dreary winter months, with delightful jewelry designs acting as harbingers of the fresh colors and florals that come with the new season.

To celebrate color, we present two color-based collections. Sugar Coated, starting on page 15, was inspired by fashion-accessory forecasts that predict smooth, matte surfaces in pretty pastel hues as a top trend. The Secret Garden collection, which begins on page 25, pays tribute to the literary classic, with designs that feature spring hues and floral motifs—just what we imagine flourishing behind the locked garden door. And to help you plan your next project, our feature article on page 7 provides the basics of how color—specifically hue, value, and saturation—affects any design.

But this issue is about more than just color. Talisman jewelry has been extremely popular lately, and we've assembled eight unique designs that put a contemporary spin on age-old symbolism (page 33). We've also noticed how many of you incorporate simple mixed-media components into your designs (think metal stamping, fabric, rivets), so in this and the next three issues, we'll present a collection of projects that include easy-to-learn mixed-media techniques or materials (page 45). Plus, with the leather trend still going strong, in each upcoming issue, we'll showcase a distinctive and exciting leather project (page 44).

I hope you find inspiration in the more than seventy irresistible designs we've collected to welcome spring!

Have fun!

Debbie

Debbie Blair, Editor
Debbie.Blair@fwcommunity.com

Follow *Jewelry Stringing* on Facebook:
www.facebook.com/BeadingDailyonFB

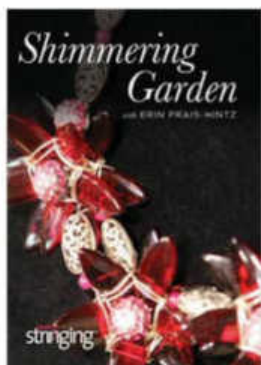


WE WANT TO HEAR FROM YOU!

We highly value our readers' opinions, so let us know what you think is working, what you don't particularly like, or what you'd like to see in future issues (for example, certain types of materials, techniques you'd like to learn, etc.). Do you like seeing more mixed-media inspiration and unique leather ideas? Do you have suggestions for business topics? Email us at stringing@interweave.com.

What We Love for Spring

Longtime *Jewelry Stringing* contributor Erin Prais-Hintz shares her secrets for creating gorgeous sparkling bead-and-wire flower designs, inspired by the contents of a beloved jewelry box filled with vintage costume jewelry, in her *Shimmering Garden* video. Available in DVD format (www.bit.ly/shimmering-garden-dvd) or digital download (www.bit.ly/shimmering-garden-video).



Content Strategist Jean Cox
Editor Debbie Blair
Managing Editor Lavon Peters
Assistant Editors Megan Lenhausen, Lindsay Jarvis
Copy Editor Nancy Arndt

Senior Designer Connie Poole
Project Photography Ann Swanson, Donald Scott

Advertising Team Leader, Bead & Jewelry Marilyn C. Koponen
Marilyn.Koponen@fwcommunity.com, (877) 613-4613
Advertising Sales Manager Stephanie Griess
Stephanie.Griess@fwcommunity.com, (877) 613-4630
Advertising Sales Assistant Cari Ullom
Marketing Manager Hollie Kuhlmann



Founder, Creative Director Linda Ligon
Books Content Director Vanessa Lyman
Director, Magazine Marketing & Fulfillment Mark Fleetwood



F+W Media, Inc.
Interim CEO/CFO/COO James Ogle
President Sara Domville
Senior Vice President, Operations Phil Graham
Vice President, Communications Stacie Berger

Designs in this issue of *Jewelry Stringing* are for inspiration and personal use only. *Jewelry Stringing* does not recommend, approve, or endorse any of the advertisers, products, services, or views advertised in *Jewelry Stringing*. Nor does *Jewelry Stringing* evaluate the advertisers' claims in any way. You should, therefore, use your own judgment in evaluating the advertisers, products, services, and views advertised in *Jewelry Stringing*. Exact reproduction for commercial purposes is contrary to the spirit of good craftsmanship.

Jewelry Stringing (ISSN 2165-3631, print/2165-364X, digital) is published quarterly by Interweave, a division of F+W Media, Inc., 4868 Innovation Drive, Ft. Collins, CO 80525-5576, (866) 949-1646. USPS #024-834. Periodicals postage paid at Fort Collins, CO 80525, and additional mailing offices. All contents of this issue of *Jewelry Stringing* are copyrighted by F+W Media, Inc., 2016. All rights reserved. Reproduction in whole or in part is prohibited, except by permission of the publisher. Subscription rate is \$31.95/one year U.S., \$35.95/one year (U.S. funds) in Canada and \$38.95 (U.S. funds) in other countries (surface delivery). Printed in the U.S.A. Postmaster: please send address changes to *Jewelry Stringing*, P.O. Box 433289, Palm Coast, FL 32143.

Retailers: If you are interested in carrying this magazine in your store, please call toll free (800) 289-0963, or email sales@fwcommunity.com.

For *Jewelry Stringing* subscription questions or concerns, contact us:
Email address: stringing@emailcustomerservice.com
U.S. Customer Service: (800) 782-1054
International Customer Service: (386) 246-0105
U.S. Mail: P.O. Box 433289, Palm Coast, FL 32143

Visit us on the web:
beadingdaily.com • interweave.com • fwmedia.com

ALL SHOWS OPEN TO THE PUBLIC! WHOLESALE/RETAIL
SEE WEBSITES FOR DETAILS & REGISTRATION LINKS!

BEST BEAD SHOPPING SHOW CLASSES!

TUCSON: Feb 1-6 & Sept 8-11
Kino Vet. Mem. Comm. Center/Mulcahy YMCA

MIAMI: Apr 1-3 & Sept 30-Oct 2
DoubleTree Miami Mart-West Hall

NEW YORK: March 18-20 & Fall TBA
Register as buyer for Updates

SEE WEBSITE FOR ADMISSION FEES AND ALL DETAILS
BestBeadShow@Yahoo.com/610.909.2674
www.BestBeadShow.com

BEAD MERCANTILE SHOWS

\$6 FULL WEEKEND **FRI:10-6/SAT:10-5**
\$3 W/ REGISTRATION** **SAT:10-5/SUN:10-4**

PITTSBURGH, PA: OCT 31- NOV 1 SAT/SUN
FT. LAUDERDALE, FL: DEC 12-13 SAT/SUN
PITTSBURGH, PA: MAR 5-6 SAT/SUN
RALEIGH, NC: MAR 12-13 SAT/SUN

SEE WEBSITE FOR ALL 2016 DATES!
cincinnati,oh - ft. lauderdale,fl - jacksonville,fl
louisville,ky - orl.maitland,fl - pittsburgh, pa -
raleigh,nc - tampa, fl - williamsburgh,va
BeadMercantile@Yahoo.com/610.909.2674
www.BeadMercantile.com

Your #1 Source Seed Beads, Pewter & More! FiberAndBeads.Com



SEE US AT ALL SHOWS ABOVE!
NEW PHILLY WAREHOUSE!
SIGN UP ONLINE FOR WEB-LAUNCH
PRE-SALE & COUPON, OPEN HOUSE
INVITES AND MORE!
E-MAIL/PHONE ORDERS AVAILABLE
FiberAndBeads@Yahoo.com 610.241.8329

Make beaded necklaces for any occasion!

Download your FREE collection today:
7 Free Patterns for Necklace Making

Get Your FREE Projects at:
www.BeadinDaily.com/7necklaces

Where your jewelry begins.

To celebrate National Craft Month, we invite you to join the 30 Day Bead Challenge! Then shop, create & share your fabulous jewelry with our community on Facebook, Instagram & Pinterest. Tag with #makeitwearitshareit

Fusion Beads Inc.

FusionBeads.com
Free US Shipping

Fusion Beads

VINTAJ

INTRODUCING OUR DESIGNER SERIES

NEW!

Discover stunning combinations to create endless designs with these filigrees, bangles, and focal pieces.

vintaj.com

MADE IN THE USA.

Golem Design Studio
Sliders for Flat Cord

AntelopeBeads.com



#1 Choice of Professionals

Stretch[®] Magic

PEPPERELL CRAFTS

www.Pepperell.com

★ Strong ★ Flexible ★ Resilient

Join our free community for beaders just like you!

Discover the joy and versatility of herringbone stitch. With

7 FREE HERRINGBONE STITCH PATTERNS

from *Beading Daily*, you'll learn flat, tubular, and circular variations, while creating stunning pieces of jewelry.

www.beadindaily.com/herringbone-stitch

Beading Daily

Get started with a *free eBook download* and sign up for free!

Beading Daily

www.Beadindaily.com/Free-eBooks

XURON[™] CORP.

for Jewelers

4-in-1 Bead Crimping Plier

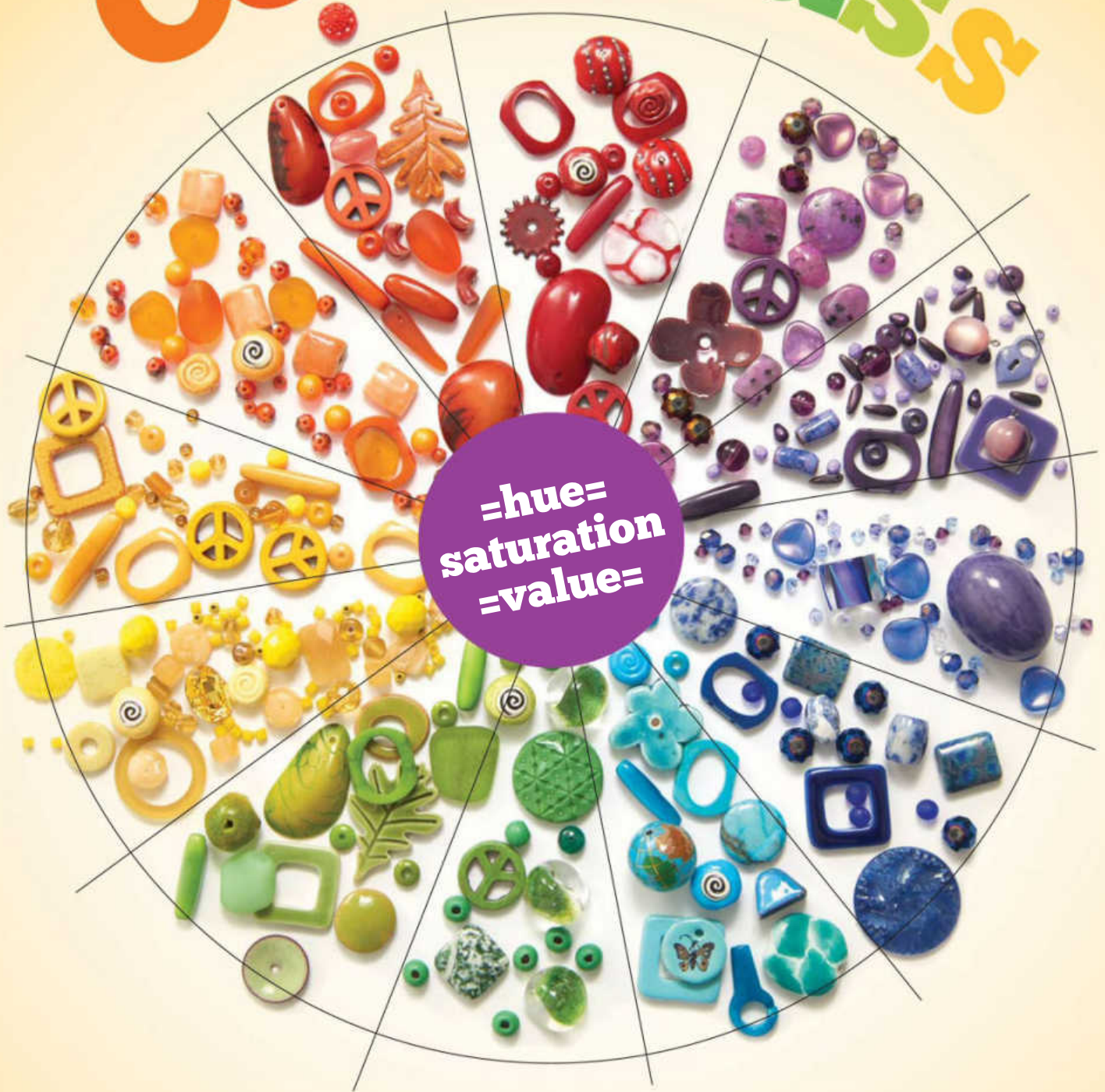
Crimping just got easier...

Made in the USA

www.xuron.me/forjewelers



Color Class

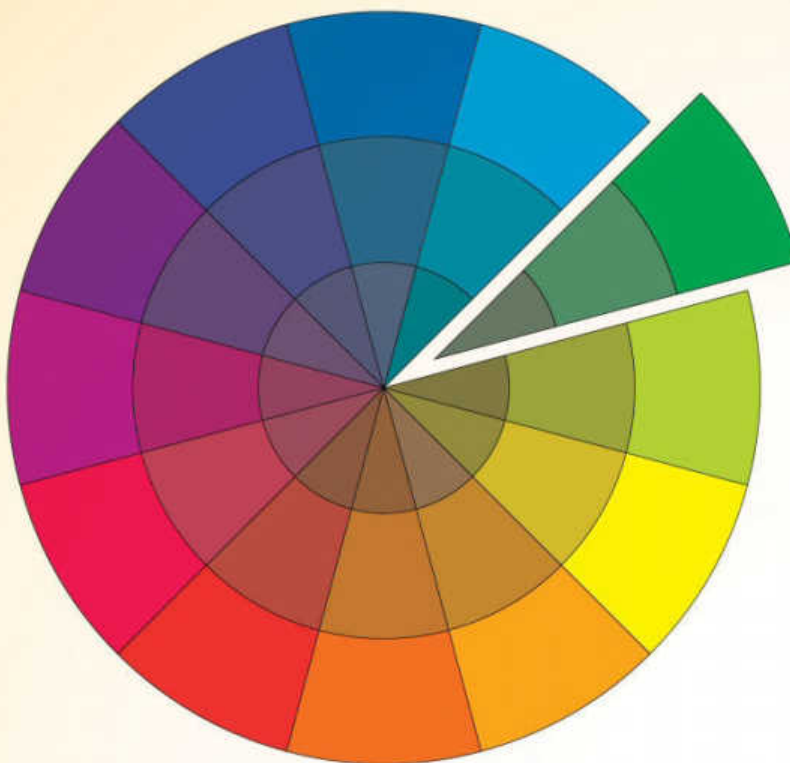


Color is truly the key to successful crafting in any medium. Choosing the right palette can really make or break your jewelry pieces, and with endless combinations of beads, pendants, wire, stones, findings, and gems, the color possibilities can become overwhelming. What follows is an excerpt from one of our favorite color theory books, *Color Works* (Interweave, 2004), by master colorist and crafter Deb Menz, which takes us back to the color basics as we learn about hue, value, and saturation—the three ways to describe a color.

Hue

Hue family refers to the wedge of the color wheel that contains a single hue with all its color variations. For example, the hue family green is highlighted on the color wheel to the right. Within it are such colors as kelly green, forest green, and mint green, among many others. Every color belongs to one of the hue families on the color wheel. If you think of the hue family name as being like a last name, then the color name is like a first name.

When only one hue family is used in a design, it is called a monochromatic design; there are many color possibilities within one hue family. In a monochromatic design, any of the colors from a given hue could be used together successfully. Of course, there are many other ways to interpret the same hue family monochromatically. There are countless possible combinations of tints, tones, shades, and blends, narrow or wide value ranges, bright and dull colors, all within one hue family.



Value

The second way to describe a color is according to its value. The value of a color has nothing to do with the color itself but is a comparison of the color to a scale of grays that ranges from white to black. Think of a black-and-white TV—although everything on the screen is in full color in real life, the images that we see appear as relative values of gray.

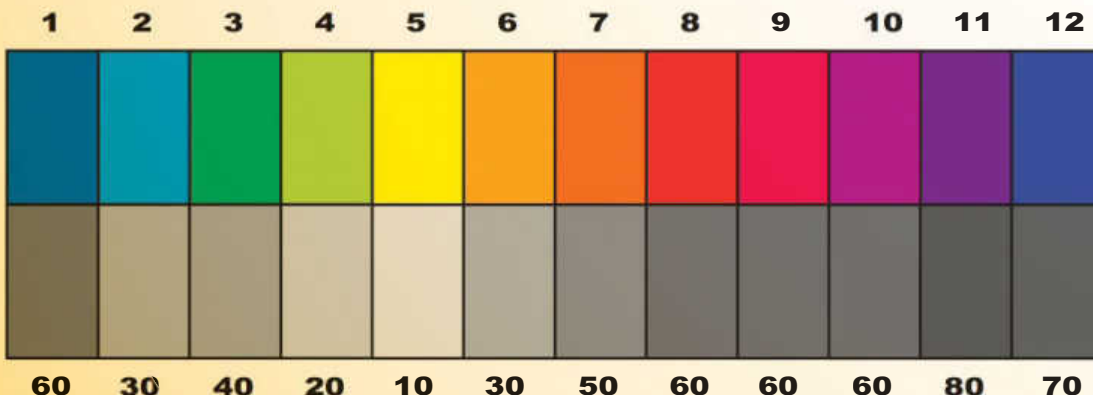
The illustration below shows the twelve hues from the color wheel and their relative values. Notice that the values differ

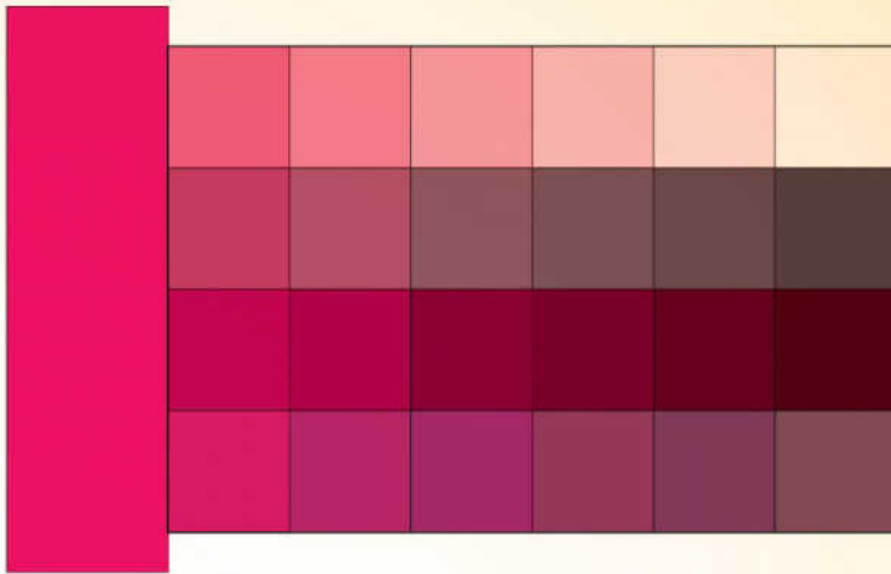
from hue to hue. The numbers on the bottom of the scale represent the percentage of black that has been mixed with white to form that particular gray. Refer to these numbers when describing colors or noting which values you want in a design.

It is difficult to determine the values of warm and very bright colors accurately because their warmth and saturation get confused with their value. A warm color

that is saturated can be perceived as lighter in value because the saturation of the color fools the eye. With practice, you will be able to see the value.

Of the three ways to describe a color, value is the most important because it is the first characteristic of a design that can be seen from a distance, and it remains important at close range.





Saturation

Saturation is the relative brightness or dullness of a color. A color is at its most saturated when nothing else has been added to it—when it's at its purest. Other words used to describe saturation are intensity, strength, and chroma.

It is easier to determine saturation when a color is compared to other colors in the same hue family. Saturated colors stand out more in a design than those that are less saturated. In the illustration above, the most saturated color is on the left.

The saturation of a color can be decreased in several ways:

Tinting: Adding white to a color will make it less saturated as well as lighter in value. The more white you add, the lighter and less saturated the color becomes.

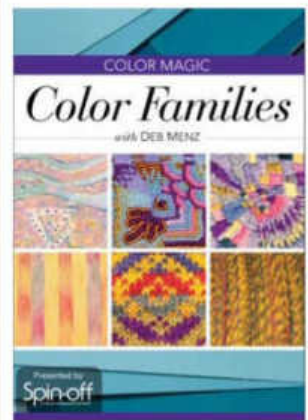
Toning: Adding gray of the same value as a color will decrease the color's saturation while maintaining its value. The more gray that you add, the less saturated the color will become.

Shading: Adding black to a color will make it both darker in value and less saturated. The more black that you add, the darker and less saturated the color becomes.

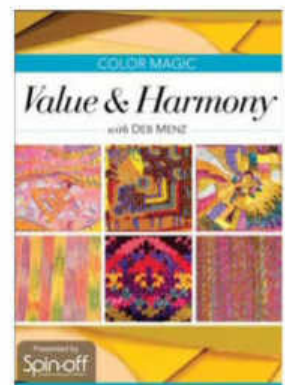
Adding a Color's Complement: Adding the color that is opposite to it on the color wheel will also make the original color duller. The value of the resulting mixed color depends on the value of the complementary color added. At some point in the mixing, a neutral gray will result. Adding its complement to a color produces a more interesting and lively mixture than does adding gray because there are three colors in the mix rather than two.

Once you understand some basic color principles, you will be in complete control of the color in your designs and will have the knowledge and confidence to make it work to your satisfaction! And remember, there are no rules about color, no rights and wrongs, only personal preferences, so have fun with it!

Want to learn more about the fascinating art of color for crafters? Check out Deb Menz's Color Magic video series, *Color Families* and *Value & Harmony*, available in DVD format or instant digital download.



[www.bit.ly/
color-family-dvd](http://www.bit.ly/color-family-dvd)



[www.bit.ly/
value-harmony-dvd](http://www.bit.ly/value-harmony-dvd)

CGM

Prompt Mail Order Toll Free 800-426-5CGM (5246)
www.cgmfindings.com www.cgmstonebeads.com

Come See Us at the **G&LW TUCSON** Show
HOLIDOME BALLROOM #40
4475 South Country Club Road
 Tucson, AZ 85714
 January 30th (Saturday)
 thru February 7th (Sunday), 2016

BEADS · FINDINGS · CHAINS

10K · 14K · 18K · 22K · STERLING SILVER · SILVER FILLED · GOLD FILLED
 BRASS · COPPER
 PRECIOUS AND SEMI PRECIOUS STONE BEADS



YOUR ONE STOP SHOP FOR

BEADS

CLASPS

LEVER BACKS

WIRE

CRIMPS

BEAD TIPS

EARWIRES

SPRING RINGS

JUMP RINGS

SPLIT RINGS

BALL EARRINGS

CHARMS

BAILS

CHAIN BY THE FOOT

& THOUSANDS OF MORE ITEMS TO CHOOSE FROM



Clasps



14K Gold Clasps with Diamonds



14K Heads and Settings



Hundreds of Chain Styles to Choose From in a variety of Metals

14K & 18K

.925 Sterling

14k Gold Filled



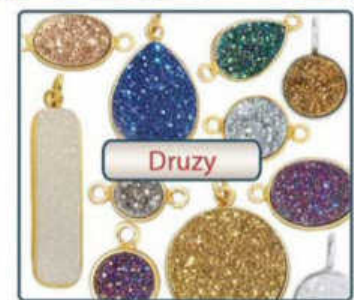
BEADS · BEADS · BEADS



Pave



Bezelled



Druzy

Look For Flyers With **TUCSON SHOW SPECIALS**

or visit us online at: WWW.CGMFINDINGS.COM · WWW.CGMSTONEBEADS.COM

Free Wholesale Catalog Visit us online today and register to take advantage of our **FEATURED ONLINE SPECIAL**

Se Habla Español stay connected

CGM Inc. · 19611 Ventura Blvd., Suite 211 · Tarzana, California · 91356

Telephone: 818-609-7088 Toll Free: 800-426-5246 Fax: 818-609-0921 Email: cgm@cgmfindings.com



CGM

Prompt Mail Order Toll Free 800-426-5CGM (5246)

or visit us online 24 hours a day

www.cgmfindings.com
www.cgmstonebeads.com

Look For Flyers With

TUCSON SHOW SPECIALS

OR **VISIT US ONLINE**

BEADS · FINDINGS · CHAINS

10K · 14K · 18K · 22K · STERLING SILVER · SILVER FILLED · GOLD FILLED

BRASS · COPPER

PRECIOUS AND SEMI PRECIOUS STONE BEADS

Precious and Semi Precious Gemstone Beads

We Offer a Wide Variety
Gemstone Beads
In a Variety of Shapes

Ask About Our
MIX & MATCH
Discounts Available On
ALL Semi Precious · Precious
Diamonds and Pearls

Round · Oval · Saucer · Cube · Drop
Nugget · Roundel · Chip · Coin · Square
Teardrop · Diamond · Marquise
And Much More

Hundreds of Chain Styles to Choose From in a variety of Metals

Bezelled

Finished

Silver Filled
Brass and Copper

Wire Wrapped

Findings

Ball Style Beads

Tools

Charms

FREE SHIPPING On ANY order of \$200 or more **PLACED ONLINE**

*within the 48 Contiguous States - UPS GROUND SHIPPING

or visit us online at: WWW.CGMFINDINGS.COM · WWW.CGMSTONEBEADS.COM

Free Wholesale Catalog Visit us online today and register to take advantage of our **FEATURED ONLINE SPECIAL**

Se Habla Español
stay connected

CGM Inc. · 19611 Ventura Blvd., Suite 211 · Tarzana, California · 91356

Telephone: 818-609-7088 Toll Free: 800-426-5246 Fax: 818-609-0921 Email: cgm@cgmfindings.com



nina designs

WHERE BEAUTIFUL JEWELRY BEGINS™
WWW.NINADESIGNS.COM : 800.336.NINA



Free Shipping in USA : Wholesale & Retail Pricing

TerraCast®

Quality in the Making

Available at
Your Favorite
Bead Retailer



Specialty Findings
Beads & Spacers
Charms & Chain
Leather & Rivets
Quick Kits & Tools



WWW.TIERRACAST.COM

follow us on Facebook, Pinterest & YouTube

Wholesale
inquires welcome

©2011 TerraCast Designs Corp. All rights reserved. TCD011

beadaholique

feed your need to bead

15% off
Enter Code
JSH6
at Checkout



Thousands of free instructional videos:
beadaholique.com/videos

ncbeads.com

\$2.00
Strands

Free Shipping
see site for details

NC BEADS

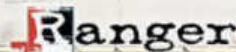


SUSAN LENART KAZMER
ICE RESIN®

Ranger and ICE Resin® are pleased to announce exciting new additions to the ICE Resin® brand. ICE Resin® is a jewelers grade, crystal clear, two-part epoxy resin. Designed by Susan Lenart Kazmer, ICE Resin® offers a variety of products for jewelry and mixed media applications.

Throughout 2016 look for new tools and accessories to complement the existing ICE Resin® line; including tints, ephemera, new bezel designs and more.

To view the entire line of ICE Resin® products, projects, videos, tips & techniques visit:
www.rangerink.com



www.rangerink.com

ImpressArt®

Deco

Available in 3mm and - new mini 1.5mm



Say it Small
New Size
 mini 1.5mm

ABCDEFGHIJKLMNOPQRSTUVWXYZ & * - @ O V ☆
 abcdefghijklmnopqrstuvwxyz? ! . (+ # 0 1 2 3 4 5 6 7 8

ImpressArt.com



Crafting Know-how

Discover how to make a living from your passion with tips, tricks, and comprehensive market listings in the new edition of *Crafter's Market 2016* (Fons & Porter, 2016). You'll find informative articles on handling custom orders and holding successful craft shows, plus complete listings of contacts and submission guidelines, all to help you develop a strong network and business plan. Purchase for \$27.99 at www.bit.ly/CraftersMarket2016.



Opalescent Options

Experiment with these new, fun-shaped beads from The Beadsmith. The cupped shape of the nano bead creates a truly organic feel, while the large hole allows for more options. With a slightly off-center balance, the UFO shape is still symmetrical and would be a unique substitute for traditional pearls. Available from www.beadsmith.com (wholesale only) or check your favorite bead retailer!

Dusted in Pretty

Create a truly eye-catching piece when you design with these iridescent beads from Bon Beads. The flecked metallic tones on the stardust daggers contrast beautifully against a deep black background. And these gold dust drops, available in a variety of lustrous jewel tones, add a beautiful shimmer to any piece. Available at www.bonbeads.com (wholesale only) or check your favorite bead retailer.



Charming Pendants

Bring back fond childhood summer memories with this darling dandelion charm set and nostalgic camp-scene pendants from Nina Designs. Available in sterling silver, these charms and pendants are sure to bring a touch of whimsy to your jewelry projects! Designs shown here range from around \$14 (pendants) to around \$25 (sets) at www.ninadesigns.com.



Stamp of Approval

Use these wax stamp alphabet charms from Beadaholique to personalize earrings, charm bracelets, and anything else you can dream up! Available in lead-free pewter, these sweet charms may be purchased for \$1.49 each at www.beadaholique.com.

Fanciful Filigree

These new filigree pieces from Vintaj can be used as an elegant focal point or embellishment in your jewelry designs. The unique luster and color are achieved through Vintaj's meticulous and eco-friendly hand-finishing process. Use any of these pieces to effortlessly add a timeless vintage look. Visit www.vintaj.com for pricing and design inspiration.



THE STAFF OF *JEWELRY STRINGING* INVITES YOU TO SEND YOUR NEW STRINGING PRODUCTS FOR CONSIDERATION IN BEAD BEAT. PLEASE SEND ALL SUBMISSIONS TO STRINGING@INTERWEAVE.COM AND INCLUDE COMPLETE PRODUCT INFORMATION.

sugar coated

A top trend for spring, you'll indulge in some serious eye candy with the matte finishes and pretty pastel hues featured in the delightful designs that follow.



sweet talk

[MEGAN LENHAUSEN]

Pretty flower accents bring out the soft touch of color in the snakeskin rounds, for a beautiful nod to spring.





peaches & cream

[GAEA CANNADAY]

String up an assortment of ceramic and weathered wood beads in no time for a delightful and wearable necklace.



don't ever leaf me

[LORELEI EURTO]

This designer called out the pendant's subtle color variations by pairing it with a handful of beaded dangles in muted tones.



sprinkles on top

[LAURENN STIPES]

Make this sweet bracelet design by securing pretty frosted glass beads to a section of chain, then fastening the chain to the bangle.



rosary trio

[ROXANNE MENDOZA]

This trio of bracelets proves that a simple combination of seed beads, rosary chain, and charms can yield beautiful—and meaningful—results.



sweet rosette

[ANNE PERRY]

Think outside the box and use a wire bracelet as the focal element of your next necklace design, as this artist has done to create a contemporary look and feel.



frosted honeysuckle

[ANNE PERRY]

A delicate strand of matte crystal pearls perfectly complements the assortment of Lucite flowers in this alluring and ladylike necklace design.

get the look



1



2



3



4



5



6



7



8

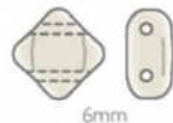
1. CONCH SHELL AND ROUND SEA GLASS BEADS: Clay Space, www.sterlingsun.etsy.com.
2. DAISY AND ROSE CERAMIC CLASP SETS: Gaea, www.gaea.cc.
3. SAGE GREEN MARBLE RECTANGLE TUBES: Treasure Box Beads, www.treasureboxbeads.etsy.com.
4. SWEET PEA AND CLOUDY SKY BALI-STYLE PRESSED-GLASS BEADS: Lima Beads, www.limabeads.com.
5. WEST GERMAN VINTAGE "SUGAR" AND CRACKLE GLASS BEADS AND PAINTED METAL BEAD CAP: The Vintage Bead Shop, www.thevintagebeadshop.etsy.com.
6. POWDER LILAC PRESSED-GLASS DROPS: Maya-Honey Lampwork, www.mayahoney.etsy.com.
7. VINTAGE FROSTED-GLASS FLUTED RONDELLES: Vintage Necessities, www.vintagenecessities.etsy.com.
8. UNGLAZED CERAMIC CUBE STRAND: Nadia Terra, www.nadiaterra.etsy.com.

the BEAD SMITH

2 Hole Czech Glass

Silky Beads®

Regular & Table Cut



- ◆ Pressed Czech glass
- ◆ 6mm angled square with two diagonal holes
- ◆ Slightly wavy surface texture
- ◆ Regular style in 140 colors
- ◆ Table Cut style in 20 colors
- ◆ String in a nested diamond pattern by alternating top/bottom holes.

Bracelet by Laura Graham, Desert Star Creations, USA



One-stop wholesale suppliers to bead stores worldwide for over 30 years! The BeadSmith is a proud distributor of these brands and more...



Kumihimo braiding

Soutache & Bead Embroidery

miniDUO™
CZECH GLASS TWO HOLE SEED BEADS BY MATUŠO

SUPERDUO™
CZECH GLASS TWO HOLE SEED BEADS BY MATUŠO

BEAD SHOPS: To become a Beadsmith reseller, please contact us at 732.969.5300 (USA) or www.beadsmith.com

BEZELS
FINDINGS
CHARMS
BRACELETS
CHAIN
RINGS
MIXED MEDIA

NUNN DESIGN®

Nunn Design offers high quality base metal findings and innovative ideas on how to create beautiful jewelry. Visit our website for free tutorials, videos and kits.

1-800-761-3557
MADE IN THE USA

www.nunn.design.com

~ Free Stringing Designs! ~
Download your FREE eBook today:

5 FREE Beading Projects to Learn How to Bead

Check out these stringing designs, pick one or make them all!

Beading Daily

GET YOUR FREE PROJECTS AT:
www.BeadDaily.com/FreeStringingProjects

Eye on Midnight by Sharon Borsavage

Tre's Turquoise by Marlene Blessing

Sorbet in August by Michelle Mach

Ultimate *Flexibility* *Soft Flex* Beading Wire

Use Soft Flex® Beading Wire
on a Kumihimo Board!

Made in the USA 🇺🇸

Kink resistant & Flexible

Knots like thread

100% Waterproof & Non-tarnishing

Extensive selection of diameters and spool lengths

Largest color selection

Hand checked for quality

Use Mini spools instead of bobbins!

Project by Sara Oehler
featured in Step-by-Step Wire
Jewelry Magazine - Dec. 2013



www.SoftFlexCompany.com

Toll Free Phone (866) 925-3539 • U.S. Phone (707) 938-3539



ONLINE BEADS DISCOUNT - Use Coupon **DOUBLE** to get an extra 20% off beads, on top of 50% discount. Expires 12/31/16.



\$5 Flat Rate Shipping On U.S. Orders - No Minimum Order



PJTOOL
JEWELRY

Everything You Need to
Create Stamped Metal Jewelry

Your source for
ImpressArt®

Free Alkémé
Stamping Blank Pack

*Limit 1 per customer



Enter Code **STR2**



www.PJToolJewelry.com

Butterfly Kisses

Create a fresh-looking necklace design by combining leather with wood beads and a ceramic pendant in sunny colors and patterns.

MATERIALS

- 1 green 6×5mm chalcedony faceted rondelle (\$0.20)
- 1 opaque green 10×7mm chalcedony faceted rondelle (\$0.20)
- 6 multicolored 16-19×7-19mm wooden tubes (\$8.52)
- 1 cream/green/coral 40×35mm butterfly ceramic oval pendant (\$12.50)
- 1 copper 9×20mm hook (\$2.00)
- 2" of copper 8×10mm textured oval chain (\$0.14)
- 48" of tan 1.5mm round leather cord (\$0.80)
- 1½" of copper 24-gauge wire

TOOLS

- Scissors
- Round-nose pliers
- Chain- or flat-nose pliers

FINISHED SIZE: 18½" (with 1½" extender)

1] Use one 24" piece of leather cord to form a lark's head knot on 1 loop of the pendant. Use both tails to string 3 wooden tubes. String the hook, then fold the cords about 3" from the end. Use all of the strands to form an overhand knot, trapping the hook in a 1" loop.

2] Repeat Step 1, attaching the cord ends to one end of the chain.

3] Use round-nose pliers to form a small loop on one end of the wire. String both chalcedony rondelles (smallest first), then form a wrapped loop that attaches to the free end of the chain. ◉

RESOURCES Check your favorite bead

retailer or contact: Similar chalcedony: Lilly's Bead Box, www.lillysbeadbox.etsy.com. Wooden tubes: Nature Scavenger, www.naturescavenger.etsy.com. Ceramic pendant, hook, and chain: Gaea, www.gaea.cc. Leather: Wild about Pearls, www.wildaboutpearls.etsy.com.

*Prices were figured on a retail per-bead basis, not including the cost of beading wire or common findings and not including tax and shipping where applicable.



The Secret Garden

Inspired by the literary classic, the motifs and hues in these enchanting necklaces pay tribute to the dewy spring blooms that we imagine flourishing behind the garden door.



The Tortoise & the Orchid

[MARTHA THOMAS]

Charming details, such as the sleepy turtle and brass dragonfly, add personality to this darling necklace.



Rock Candy

[KARLIN JONES]

A delightful handcrafted tassel hangs from a complementary strand of gemstones in this colorful spring necklace.



Floral Meadow

[ANNE PERRY]

Faded green ribbon, muted pink glass, and yellow painted flowers lend a vintage feel to this garden-themed necklace.





Rose Blush

[CANDIE COOPER]

Sparkly beads in muted tones perfectly complement the sizable acrylic pendant, which gives this necklace its “wow” factor!



Key to the Garden

[TERRY RICIOLI]

This dreamy necklace features a pretty combination of pastel flowers with patina and brass accents.





Lilac Patch

[REJETTA SELLERS]

A patterned lampwork bead becomes the fetching focal piece of this necklace design when paired with matching pearls and a floral flourish.



Learn how to make polymer clay beads. Visit www.bit.ly/making-polymer-clay-beads for Carol Blackburn's guide, *Making Polymer Clay Beads*.



Little Birdies

[MARTHA THOMAS]

A springtime motif is carried out in this beaded necklace via polymer clay beads, glass flowers and leaves, and fun metal-leaf chain.



Get the Look



1. VINTAGE LUCITE NUGGET CHAIN: Vintage Bead Cache, www.vintagebeadcache.etsy.com.
2. PRESSED-GLASS FERN BUTTON, BRONZED WISTERIA TURBINE BEADS, AND CHARTREUSE SPOTTED SQUARES: Lima Beads, www.limabeads.com.
3. LAMPWORK HEAD PINS: Boldenka, www.boldenka.etsy.com.
4. LUCITE LEAF AND FLOWER BEADS AND CABOCHONS: Delphine's Flower Bead Shop, www.delphinesflowerbeadshop.com.
5. SATIN LEAF RIBBON: Factory Direct Craft, (800) 252-5223, www.factorydirectcraft.com.
6. LUCITE FLOWERS AND LAMPWORK HEAD PINS: Fire and Fibers, www.fireandfibers.com.
7. VINTAGE LUCITE FLAT OVAL AND MARQUIS ORNATE BEADS: Reduction Nation, www.reductionnation.etsy.com.
8. POLYMER CLAY FLOWER BEADS AND LEAF CHARMS: Too Aquarius, www.tooaquarius.etsy.com.

CONTEMPORARY TALISMAN

Invite good fortune with these modern pieces that incorporate the feel of ancient talismans. These symbols, often used to guard and protect, can also have a personal meaning unique to each wearer.



MOON GAZING

[LORALEE KOLTON]

This piece was inspired by the anonymous quote "The sun sees your body; the moon sees your soul." Under the moon's gaze, we can find a sense of magic and mystery.





MAKER OF DREAMS

[LISA MARIE BALDOCK]

The designer created this necklace to remind the wearer that life is short and that you need to believe in yourself and make your own dreams come true.





PERCHED IN THE SOUL

[CLAIRE LOCKWOOD]

The title of this piece was inspired by an Emily Dickinson poem: "Hope' is the thing with feathers that perches in the soul." Use this necklace as a talisman to ward off despair and doubt.





EYE OF THE BEHOLDER

[LORELEI EURTO]

Beauty is in the eye of the beholder; the intrinsic beauty of this necklace lies in the Zen qualities of each of its components.



Find more ways to create meaningful jewelry with the *Amulets and Talismans* eBook, available at www.bit.ly/amulets-and-talismans.



IN GOOD HANDS

[KRISTINA HAHN ELENAK]

The hamsa is a good luck amulet used for protection, and a heart with wings symbolizes love, joy, optimism, and freedom. Together, these symbols protect your ability to be your own free spirit.



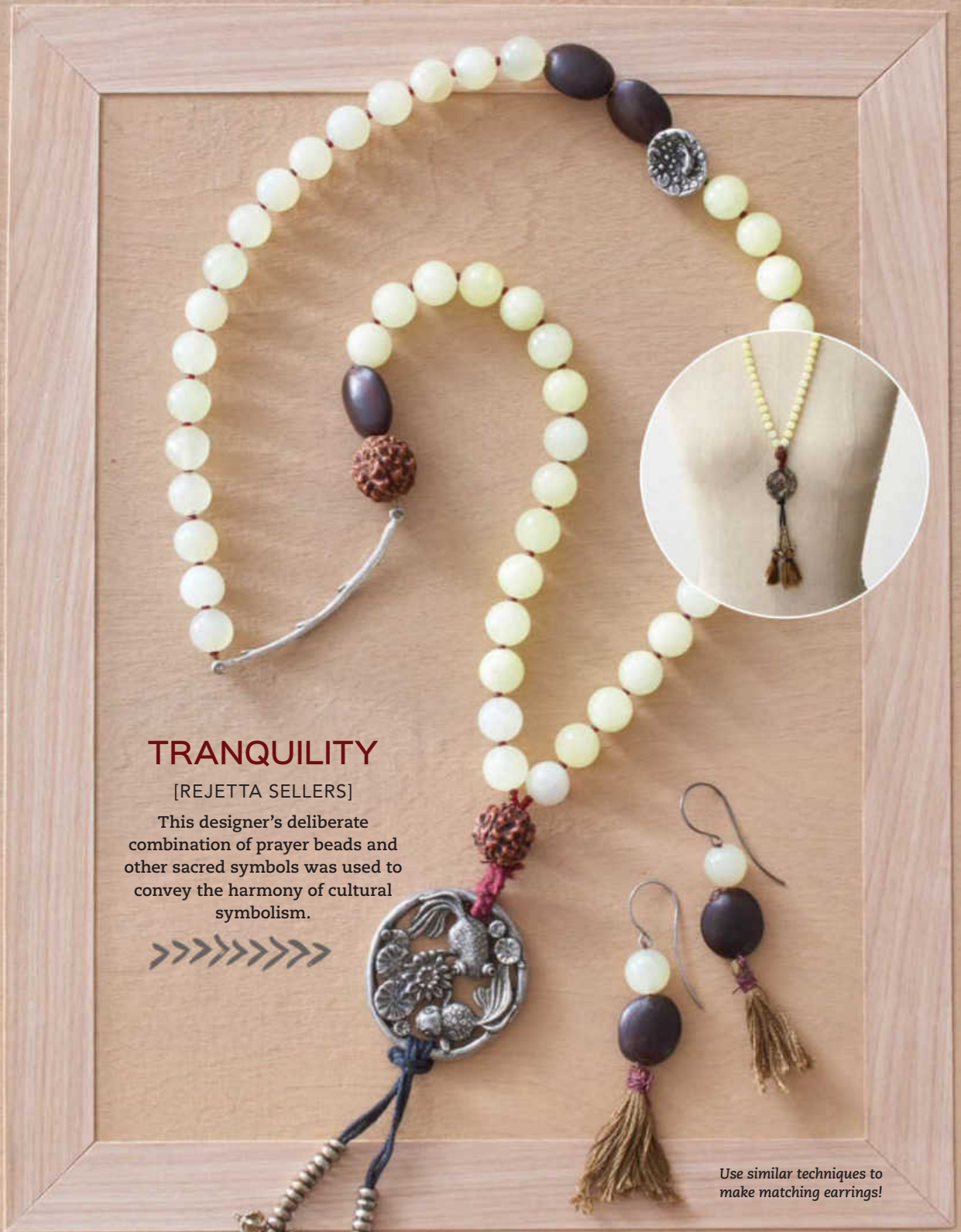


TELESMA

[SAMANTHA SLATER]

This necklace provides a reminder for self-reflection. The Om and Buddha are meditative symbols, the elephant represents strength, and the amazonite beads empower you to discover your own truth.





TRANQUILITY

[REJETTA SELLERS]

This designer's deliberate combination of prayer beads and other sacred symbols was used to convey the harmony of cultural symbolism.



Use similar techniques to make matching earrings!



SACRED SPACES

[ANNE PERRY]

This necklace is based on the belief that there are many paths to the sacred. Although specific practices might be defined and contained, there is more that connects us than separates us.



GET THE LOOK

1. BOHEMIAN-STYLE HORN PENDANTS AND ELEPHANT, EVIL EYE, AND HAMSA CONNECTORS: JesseJamesBeads.com, (484) 894-5043.
2. EMBOSSED BRASS SPEARHEAD PENDANT, MOROCCAN HOOP EARRING FINDING, AND DISTRESSED COPPER MOON PENDANT: Missficklemedia, www.missficklemedia.etsy.com.
3. VINTAGE ANTIQUED-SILVER ACRYLIC TEARDROP, VINTAGE SILVER ACRYLIC PERFUME VIAL CHARM, AND CARVED ACRYLIC GREEK SCROLL TUBE AND TRIBAL BEAD: Vintage Bead Cache, www.vintagebeadcache.etsy.com.



4. PRESSED-GLASS SHAMROCK OVALS, VINTAGE GLASS KOI CABOCHON, ROSE GOLD HAMSA CHARM WITH CRYSTALS, AND SILVER-PLATED ENAMELED EVIL EYE CHARM: Beadaholique, (866) 834-4618, www.beadaholique.com.
5. ASSORTED TIBETAN PENDANTS AND PRAYER BEADS: Happy Mango Beads, (970) 532-2546, www.happymangobeads.com.
6. WISHBONE CHARMS IN ANTIQUED-COPPER, ANTIQUED-GOLD, AND STERLING SILVER-PLATED: Nunn Design (wholesale only), (800) 761-3557, www.nunn.design.com.



19 bracelet designs!

Step into the sunshine with the calming pastel hues and dewy finishes of these bracelets that are sure to brighten up your spring!



Techniques required to make the bracelets are on page 77;
for resource information, see page 78.



10



11



13



14



12



14

15



16



17

18



19

Lady in Lace

Guest contributor Taya Zul

Lovely details, such as the heirloom-style lace and sweet silver heart, give this stylish leather cuff its beautiful rustic charm.

MATERIALS

1 silver 9mm heart slider bead (with 4mm hole)
1 antiqued bronze 37×19mm magnetic bar clasp
7" of vintage violet 4mm round braided leather
7" of black 5mm flat leather with stitching
7" of natural with gold specks 5mm flat cork
7" of light brown natural soft leather scrap (at least 3/8" wide)
7" of ivory 20mm lace border
Fabric glue
Jewelry cement

TOOL

Scissors

FINISHED SIZE: 7"

Tip: To achieve clean edges on the leather scrap, the designer recommends using a rotary cutter and a cutting mat.



1] Cut the leather scrap so it is 7" long by 3/8" wide. Spread fabric glue on one side of the leather strip and attach the lace, aligning the straight edge of the lace with one edge of the leather. Let dry.

2] Slide the heart bead to the center of the cork.

3] Place several drops of jewelry cement in the channel of one half of the clasp. Insert one end of the leather/lace strip, making sure the freeform edge of the lace is on the bottom edge of the bracelet when worn.

4] Insert one end of the cork strip into the channel, next to the lace. Insert one end of the black leather strip into the channel, next to the cork. Insert one end of the braided leather into the channel, next to the black leather.

5] Repeat Steps 3 and 4 using the other half of the clasp. ◉

RESOURCES

Check your favorite bead retailer or contact: Similar heart slider: Lauren's Jewelry Box, www.lrpjewelrybox.etsy.com. Similar bar clasp: Beads Paradise, www.beadsparadise.etsy.com. Round braided leather: Aussie Bead Supply, www.aussiebeadsupply.etsy.com. Similar flat leather: Jewellery of Lords, www.jewelleryoflords.etsy.com. Flat cork: The Jewel Dean, www.thejeweldean.etsy.com. Similar leather scrap, fabric glue, and jewelry cement: Hobby Lobby, (800) 888-0321, www.hobbylobby.com. Similar lace: Ichi My Love, www.ichimyllove.etsy.com.

FOR IN-DEPTH TECHNIQUE INFORMATION, SEE PAGE 77.

Try your hand at easy beadweaving! Download the beaded Daisy Lace pattern at www.bit.ly/daisy-lace for an easy pearl and crystal bracelet.

mixed media

Expand your jewelry-making repertoire as you incorporate fabric, paper, resin, and even duct tape into your designs for a truly unique look.



Field notes

[SHARON BORSAVAGE]

Create a personalized statement piece by combining pages from old books, letters, sheet music, or other paper mementos with leather and charms.

Want ideas using leather? Download the pattern for a flower brooch with leather and fabric at www.bit.ly/leather-flower-brooch.

DEWBERRY BROOCH

[BETH SHEA]

Create a dazzling brooch by stitching and gathering a section of silk ribbon, then adding a handful of vintage-looking jewelry findings.



FROM THE HEART

[KRISTINA HAHN ELENIAK]

Secure metal components to one another with easy-to-use nail-head rivets, as this designer has done in her metal and leather bracelet design.



Daisy BLUE

[REJETTA SELLERS]

Think outside the box and you'll discover clever uses for some unlikely materials, such as the duct-tape flowers added to this cheerful bracelet design.

GADGETS & GEARS

[KAYE KRAUS]

It's easy to get the look of resin without the mess or wait time—simply affix resin circles to your favorite paper scraps or photographs, as this designer has done in her intriguing charm bracelet.



Craving more
steampunk inspiration?
Get the book *Steampunk
Emporium*, by Jema
Emily Ladybird Hewitt, at
www.bit.ly/steampunk-emporium.

For more easy resin component ideas, download *Beadwork* editor Melinda Barta's *Custom Collage Charms* video at www.bit.ly/custom-collage-charms.



HAPPY GO LUCKY

[ERIN STROTHER]

A bright assortment of semiprecious beads perfectly complements the customized paper-and-brass links in this lively necklace design.



jazz june

[ANNE POTTER]

This designer tucked a snippet from a favorite poem by Gwendolyn Brooks inside a hinged frame pendant, then formed a beautiful rosary-style chain for added color.



vintage victorian cuff

[CAROL SPINSKI]

Embellish an old belt using a rubber stamp and some vintage buttons and jewelry parts for a leather cuff that oozes boho charm.

GET THE LOOK



1. TIM HOLTZ DISTRESS GLITTER DUST IN VINTAGE PLATINUM: Ranger Industries, (732) 389-3535, <http://shop.rangerink.com>.

2. TIM HOLTZ TYPEWRITER CHARM SET WITH ALPHABET AND CLEAR EPOXY STICKERS: Beadaholique, (866) 834-4618, www.beadaholique.com.

3. CONE, STAR, AND SKULL METAL SCREW-BACK STUDS: Hoopalicious Supply Co., www.hoopaliciousupply.co.etsy.com.

4. HOTFX CORDLESS VACUUM HOTFIX FLAT BACK CRYSTAL APPLICATOR WITH SPOTLIGHT: The Beadsmith (wholesale only), (732) 969-5300, www.beadsmith.com.

5. STAMP ENAMEL ACRYLIC INK FOR STAMPED IMPRESSIONS: ImpressArt (wholesale only), (631) 940-9530, www.impressart.com.

6. ACRYLIC-AND-GLASS LOCKETS: GoodyBeads.com, (952) 938-2324.

7. TURQUOISE CHIP BEADS AND ITSY BOTTLES WITH PLAIN AND CHANNEL TOPS: Nunn Design (wholesale only), (800) 761-3557, www.nunn-design.com.

Happy Mango Beads



www.happymangobeads.com

**SHIPWRECK
BEADS**

The World's Largest
Selection!

Sales (800)950-4232
Info (360)754-2323

8560 Commerce Place Drive
NE Lacey, WA 98516



Over 10,000 styles &
colors of Czech glass
including the NEW
PRECIOSA Chili™

Primary Distributor of
PRECIOSA
Traditional Czech Beads

shipwreckbeads.com

New and Exclusive Products from Beadalon & Artistic Wire

AWARD
WINNING!

3D Bracelet Jig™ PATENT PENDING

Create trendy bangle bracelets,
cuff bracelets, and curved
components.



Bracelet Bangle Weaving Tool

by Kleshna

Weave intricate bracelets with ease using Cord,
Supplemax, or Beadalon Bead Stringing Wires.



Large Wire Crimp Connectors

The perfect cold connection to join together
12, 14, and 16 gauges of Artistic Wire and
other large gauge wires.



B-Lon™

B-Lon is a Tex210 nylon thread specially
formulated for a variety of beading and
jewelry making applications.

Findings Forms™ PATENT PENDING

Use these clever fixed peg jigs to make
your own wire clasps, ear wires,
connectors, and shapes.



The Really Big Jig™

Use this mega-jig to create large designs on the
11.25 in x 11.25 in (28.57 cm x 28.57 cm) work area.



Beadalon®

Artistic Wire®

To find an Artistic Wire/Beadalon retailer near you,
please visit www.beadalon.com/store_locator.asp



24 earring designs!

Turn over a new leaf with these refreshing spring earrings, sure to inspire many an outfit this season!



1



2



3



4



5



6



7



8



9



10



11



12

Techniques required to make the earrings are on page 77; for resource information, see page 78.





sweet talk p. 15

[MEGAN LENHAUSEN]

MATERIALS

- 4 silver-plated 2mm fire-polished rounds (A)
- 22 light pink 6mm snakeskin faceted-glass rounds (B)
- 20 pink 8mm snakeskin faceted-glass rounds (C)
- 20 powder blue 8mm snakeskin faceted-glass rounds (D)
- 4 aqua 10mm stone flower beads
- 1 pink 8x13mm trumpet flower
- 1 white shimmer 14x4mm 2-hole cup button
- 4 silver 24-gauge 1½" head pins
- 44" of vintage green 1mm hemp cord

TOOLS

- Round-nose pliers
- Wire cutters
- Scissors
- Multipurpose adhesive (optional)

FINISHED SIZE: 28" (shortest strand)

Note: If it becomes difficult to thread the cord through the snakeskin rounds, try trimming the end of the cord at an angle and coat the end with superglue to avoid fraying; let dry and then continue stringing beads.

- 1] Use 1 head pin to string 1A and 1 aqua stone flower and form a wrapped loop; repeat.
- 2] Use 1 head pin to string 1A, 1 aqua stone flower, and 1 hole of the button; form a wrapped loop.
- 3] Use 1 head pin to string 1A, 1 aqua stone flower, and the trumpet flower; form a wrapped loop.
- 4] Use one 36" piece of cord to string 8B and 2C. String 1 dangle from Step 1 and the dangle from Step 2. String 8C, 7D, and 8C. String the remaining dangle from Step 1. String 2C and 8B. Center the beads on the cord.
- 5] Use one 8" piece of cord to string the dangle from Step 3. String 3B, 13D, and 3B. Tie the first end of the 8" piece cord to the cord used in Step 4, directly below the first 2C strung in Step 4 and directly above the first 2 dangles so that all 3 dangles form a cluster. Tie the second end of the 8" piece of cord directly above the second dangle from Step 1. Trim the ends of the 8" piece of cord to ½"; fray the ends.

- 6] With the beads centered snugly on the cord, tie an overhand knot directly after the first B strung in Step 4; repeat to tie a knot directly after the last B strung in Step 4.
- 7] Use the ends of the cords to tie an overhand knot, leaving a 2½" tail. ☺

RESOURCES Check your favorite bead retailer or contact: Silver fire-polished rounds: Beadsmith (wholesale only), (732) 969-5300, www.helby.com. Pink and blue fire-polished rounds, aqua stone flowers, and Dazzle-It hemp cord: John Bead (wholesale only), (888) 755-9055, www.johnbead.com. Trumpet flower: MK Beads, www.mkbeads.etsy.com. Cup button: The Potomac Bead Co., (301) 393-4667, www.potomacbeads.com. Head pins: Beadaholique, (866) 834-4618, www.beadaholique.com.



peaches & cream p. 16

[GAEA CANNADAY]

MATERIALS

- 3 multicolored 15-20x8-25mm wooden tubes
- 1 cream 12x10mm ceramic rondelle
- 1 cream/green/coral 30x40mm ceramic oval pendant
- 2 copper 20mm rings
- 42" of tan 3mm suede lace

TOOL

- Scissors

FINISHED SIZE: 25" (with 4" focal)

- 1] String the ceramic pendant to the center of the suede lace. Use both tails to string all of the wooden tubes, the ceramic rondelle, and both copper rings.
- 2] Fold the length of suede lace in half, bringing the tails to the middle of the ceramic pendant.
- 3] Use all 4 strands of suede lace to form an overhand knot snug against the ceramic rondelle. ☺

RESOURCES Check your favorite bead retailer or contact: Ceramic rondelle, ceramic pendant, and copper rings: Gaea, www.gaea.cc. Wooden tubes: Nature Scavenger, www.naturescavenger.etsy.com. Suede lace: LeatherCord USA, (877) 700-2673, www.leathercordusa.com.



don't ever leaf me p. 17

[LORELEI EURTO]

MATERIALS

- 3 assorted 4mm Indonesian-glass rounds (1 peach, 1 light blue, 1 lavender) (small)
- 3 assorted 6mm Indonesian-glass rounds (1 coral, 1 dark green, 1 dark blue) (medium)
- 1 light green 8mm Indonesian-glass round (large)
- 1 halo ethereal 8mm pressed-glass melon
- 1 beige-and-green 20x40mm ceramic leaf pendant
- 1 brass 15mm jump ring
- 4 brass 22-gauge 2" head pins
- 2 antiqued silver 4mm snap rivet sets
- 29" of walnut brown 4mm deerskin leather lace

TOOLS

- Round-nose pliers
- 2 pairs of chain- or flat-nose pliers
- Leather hole punch
- Ballpoint pen
- Rivet snap setter
- Bench block
- Hammer

FINISHED SIZE: 27"

- 1] Use 1 head pin to string 1 medium and 1 small glass round; form a wrapped loop.
- 2] Repeat Step 1.
- 3] Repeat Step 1 using the large glass round and 1 medium glass round.
- 4] Repeat Step 1 using the melon and 1 small glass round.
- 5] Use the jump ring to string 2 dangles formed in the previous steps, the leaf pendant, and 2 dangles.
- 6] Use the leather hole punch to punch a hole about ⅛-¼" from one end of the leather. String this end of the leather through the jump ring and fold it under the leather so there is about ½" of overlap. Use the pen to mark a hole on the overlapped leather that lines up with the previous hole, then punch a hole at the mark. Insert the post of 1 rivet set through the holes in the leather, from bottom to top. Place the cap over the post and use your fingers to snap the rivet ends together. Place the leather on the bench block and the rivet setter over the cap. Strike the setter with the hammer to set the rivet.
- 7] Repeat Step 6 using the other end of the leather. ☺

RESOURCES Check your favorite bead retailer or contact: Glass rounds: Happy Mango Beads, (970) 532-2546, www.happymangobeads.com. Pressed-glass melon: Five Sisters, www.fivesisters.etsy.com. Ceramic leaf: Clay Genie, www.facebook.com/jean.christen.5. Jump ring and head pins: Vintaj, www.vintaj.com. Snap rivets: TierraCast (wholesale only), www.tierracast.com. Leather lace: Leather Industries of America, (202) 342-8497, www.leatherusa.com.



sprinkles on top p. 18

[LAURENN STIPES]

MATERIALS

- 6 light pink 4mm frosted crystal bicones
- 6 clear 6mm frosted crystal bicones
- 6 coral 3×5mm pressed-glass pinch beads
- 6 coral 4mm pressed-glass rounds
- 6 clear 6mm frosted pressed-glass rounds
- 2 silver 21-gauge 1½" ball-end head pins
- 30 silver 24-gauge 1½" ball-end head pins
- 1 antiqued silver-plated 8" bangle
- 2½" of silver 3×4mm oval chain

TOOLS

- Wire cutters
- Chain- or flat-nose pliers
- Round-nose pliers
- Permanent marker
- 1.25mm metal hole punch

FINISHED SIZE: 8"

Tip: Separate the beads into a pile of light-colored beads and a pile of dark-colored beads. Add them to the chain in an alternating and pleasing order.

- 1] Use one 24-gauge head pin to string 1 bead; form a wrapped loop that attaches to the first link on one end of the chain. Repeat entire step to attach a second bead to the opposite side of the same chain link.
- 2] Repeat Step 1 using the remaining beads, attaching 1–2 beads to each consecutive chain link.
- 3] Stretch the chain along a section of the channel of the bangle. Use the marker to place marks on the bangle where the first and last chain links line up when the chain is pulled tight. Use the hole punch to punch a hole on each mark.
- 4] String one 21-gauge head pin through one hole in the bangle, from inside to outside, then thread the first chain link. Form a wrapped loop, securing the chain link.

- 5] Pull the chain tight and repeat Step 4 using the other end of the chain. ☺

RESOURCES Check your favorite bead retailer or contact: All materials: FusionBeads.com, (888) 781-3559.



rosary trio p. 18

[ROXANNE MENDOZA]

MATERIALS

- 11 g of metallic rose pink size 6° seed beads
- 1 light blue opaque 4mm fire-polished bicone
- 1 turquoise blue 4mm fire-polished bicone
- 1 clear 4×6mm pressed-glass cathedral bead
- 1 metallic pink 6mm fire-polished bicone
- 1 teal 4mm painted metal round
- 4 assorted metal 9–14×14–20mm religious saint and cross charms
- 3 antiqued silver 7mm spring ring clasps
- 2 antiqued silver 22-gauge 1" head pins
- 1 brass 22-gauge 2" eye pin
- 4 antiqued silver 4mm jump rings
- 2 antiqued silver 6mm jump rings
- 2 brass 6mm jump rings
- 4 silver-plated 2mm crimp tubes
- 1 brown patina 8" metal rosary bracelet
- 20" of silver .018 beading wire

TOOLS

- 2 pairs of chain- or flat-nose pliers
- Round-nose pliers
- Wire cutters
- Crimping pliers

FINISHED SIZE: 7¼" (each bracelet)

Tip: You can create your own rosary bracelet using vintage-looking metal rose beads, brass eye pins, and small brass chain.

- 1] Use 1 brass jump ring to attach 1 clasp to one end of the rosary bracelet. Form a coil link by using the eye pin to form a wrapped loop, wrapping the wire portion of the eye pin around itself several times after forming the loop.
- 2] Use 1 head pin to string the turquoise blue bicone, the cathedral bead, and the light blue bicone; form a wrapped loop. Use 1 silver 4mm jump ring to attach the dangle to one loop of the wire coil link formed in Step 1. Use the remaining brass jump ring to attach 2 religious charms and the same loop of the coil link to the free end of the rosary bracelet, leaving one end of the coil link free

to fasten the clasp to when worn. Set this bracelet aside.

- 3] *Use one 10" piece of beading wire to string 1 crimp tube and 1 silver 6mm jump ring; pass back through the crimp tube and crimp. String 56 seed beads, 1 crimp tube, and the loop on 1 clasp; pass back through the crimp tube and crimp.** Attach 1 silver 4mm jump ring to 1 religious charm. Use 1 silver 4mm jump ring to attach the previous jump ring to the loop on the clasp. Set this bracelet aside.
- 4] Repeat from * to **. Use the remaining head pin to string the pink bicone and the teal round; form a simple loop that attaches to the loop on the clasp. Use 1 silver 4mm jump ring to attach the remaining religious charm to the loop on the clasp. ☺

RESOURCES Check your favorite bead retailer or contact: Blue bicones: Fire Mountain Gems and Beads, (800) 355-2137, www.firemountaingems.com. Cathedral bead: Arte Bella Surplus, www.artebellasurplus.etsy.com. Metallic pink bicone: Michaels, (800) 642-4235, www.michaels.com. Similar religious charms and rosary bracelet: Catholic Saint Medals, www.catholicssaintmedals.com (or search eBay or Amazon). All other materials: Jo-Ann Fabric and Craft, (888) 739-4120, www.joann.com.



sweet rosette p. 19

[ANNE PERRY]

MATERIALS

- 1 rose coral 11×7mm faceted-glass rondelle
- 31 cream/gray 6–9×6–11mm Job's tears seeds
- 1 matte coral 33mm swirled ceramic disc
- 31 antiqued brass 2mm rounds
- 2 antiqued brass 4mm rounds
- 2 antiqued brass 6mm rounds
- 45 antiqued brass 6mm micro washers
- 1 antiqued brass 12×24mm hook clasp
- 3 antiqued brass 6mm jump rings
- 2 antiqued brass 2mm crimp tubes
- 1 antiqued brass 14-gauge wire bracelet
- 6" of antiqued brass 3×4mm Figaro chain
- 17" of antiqued brass .015 beading wire

TOOLS

- Round-nose pliers
- 2 pairs of chain- or flat-nose pliers
- Wire cutters

FINISHED SIZE: 16"

1] Depending on the style of bracelet you use, you may need to open a loop at one end of the bracelet or otherwise bend one end open in order to add the washers. String 23 washers onto the bracelet. Use round-nose pliers to form a loop on the open end of the bracelet.

2] String one 3" piece of chain through the hole in the ceramic disc, then use 1 jump ring to attach both ends of the chain to the loop on one end of the bracelet. Repeat entire step.

3] Attach the remaining jump ring to the loop on one end of the bracelet. Use the beading wire to string 1 crimp tube and the previous jump ring; pass back through the crimp tube and use pliers to flatten the tube. String one 4mm brass round, 15 washers, and one 6mm brass round. String {1 Job's tears seed and one 2mm brass round} twenty-eight times. String the faceted-glass rondelle. String {one 2mm brass round and 1 Job's tears seed} three times. String the remaining 6mm brass round, 7 washers, the remaining 4mm brass round, 1 crimp tube, and the hook clasp; pass back through the crimp tube and flatten. ©

RESOURCES Check your favorite bead retailer or contact: Similar faceted-glass rondelle: Snoochy, www.snoochy.etsy.com. Job's tears seeds: Beads by the Bay, (805) 772-3338, www.morrobaybeads.com. Ceramic disc: Allene's Beads, (818) 761-8641, www.allenesbeads.com. Micro washers: Artbeads.com, (866) 715-2323. Wire bracelet and beading wire: Michaels, (800) 642-4235, www.michaels.com. Chain: Beads U Need, (714) 534-3420, www.beadsuneed.com. All other materials: Beadaholique, (866) 834-4618, www.beadaholique.com.



G **frosted honeysuckle** p. 20

[ANNE PERRY]

MATERIALS

- 1 g antiqued brass size 11° seed beads
- 31 sage green 6mm crystal pearls
- 2 pink 12×22mm mother-of-pearl rectangles
- 3 pale gray 12×30mm Lucite fluted flowers
- 1 frosted silver 12×30mm Lucite fluted flower
- 1 frosted gray 12×30mm Lucite fluted flower
- 1 frosted rose 12×30mm Lucite fluted flower
- 4 platinum 25×7mm Lucite 5-petal flowers
- 1 multicolored 15mm metalized plastic shank button
- 4 antiqued brass 4mm rounds
- 4 antiqued brass 22-gauge 1½" head pins

- 1 antiqued brass 24-gauge 1½" eye pin
- 1 antiqued brass 6mm jump ring
- 2 antiqued brass 2mm crimp tubes
- ¾" of antiqued brass 6×8mm long-and-short oval chain
- 17" of antiqued brass .015 beading wire

TOOLS

- Round-nose pliers
- 2 pairs of chain- or flat-nose pliers
- Wire cutters

FINISHED SIZE: 18"

1] Use 1 head pin to string 1 crystal pearl and one 5-petal flower; form a wrapped loop that attaches to 1 large link on the end of the chain. Repeat entire step three times, attaching each subsequent wrapped loop 2 large links from the previous wrapped loop.

2] Attach the jump ring to the shank of the button. Attach 1 eye pin to the jump ring. String 1 mother-of-pearl rectangle and form a simple loop that attaches to the first large chain link from Step 1.

3] Use the beading wire to string 1 crimp tube and the free end of the chain; use pliers to flatten the crimp tube. String 1 brass round and all of the fluted flowers, stringing them from lightest to darkest and so each narrow end fits into the large end of the adjoining flower.

4] String 1 brass round, the remaining mother-of-pearl rectangle, and 1 brass round. String {1 crystal pearl and 1 seed bead} twenty-six times. String 1 crystal pearl, the remaining brass round, 1 crimp tube, and 27 seed beads; pass back through the crimp tube, forming a loop large enough to fit around the button, and flatten the tube. ©



RESOURCES Check your favorite bead retailer or contact: Similar mother-of-pearl rectangles: Earthstone.com, (800) 747-8088. Lucite fluted flowers: FusionBeads.com, (888) 781-3559. Lucite 5-petal flowers: Delphine's Flower Bead Shop, www.delphinesflowerbeadshop.com. Button: Boyer Estate Liquidations, (760) 727-5050. Chain: Artbeads.com, (866) 715-2323. Beading wire: Michaels, (800) 642-4235, www.michaels.com. All other materials: Beadaholique, (866) 834-4618, www.beadaholique.com.



H **the tortoise & the orchid** p. 25

[MARTHA THOMAS]

MATERIALS

- 4 assorted 10mm lampwork teardrops (1 green and 3 purple)
- 1 cream 12×4mm lampwork ring
- 2 cream 15×9mm lampwork rondelles
- 2 green 6×9mm faceted garnet ovals
- 1 rose 17mm ceramic lentil
- 2 cream-and-sage 17mm polka-dotted ceramic lentils
- 1 green 20×15mm polymer clay tortoise bead
- 1 cream/rose/green 25×59mm ceramic orchid pendant
- 2 antiqued brass 3mm corrugated melons
- 4 antiqued copper 4mm corrugated melons
- 1 antiqued brass 21×17mm dragonfly charm
- 2 antiqued brass 24-gauge 1" head pins
- 6 antiqued brass 7.25mm jump rings
- 1 antiqued brass 10mm jump ring
- 12" of pearl white 2mm leather cord
- 72" of brown 3mm suede lace
- 4" of antiqued brass 20-gauge craft wire
- 10" of antiqued brass 16-gauge craft wire

TOOLS

- Round-nose pliers
- Wire cutters
- 2 pairs of chain- or flat-nose pliers
- Scissors

FINISHED SIZE: Adjustable to 36"

1] Use the 20-gauge wire to form a double-wrapped loop. String one 3mm melon, the tortoise, and one 3mm melon; form a double-wrapped loop.

2] Use one 5" piece of 16-gauge wire to form a wrapped loop. String one 4mm melon, 1 lampwork rondelle, and one 4mm melon; form a wrapped loop. Repeat entire step.

3] Use 1 head pin to string 1 green garnet oval, then form a wrapped loop; repeat.

4] Use one 7.25mm jump ring to string the dragonfly charm and 1 garnet oval dangle. Use the white leather cord to string the previous jump ring and form a 1" loop on one end of the cord. Form an overhand knot below the loop, trapping the jump ring in the loop. Use the long cord end to string the rose lentil and both polka-dotted lentils.

Use one 7.25mm jump ring to string 1 lampwork teardrop, then use the long cord end to string the remaining garnet oval dangle and the lampwork teardrop dangle just formed. Form a 1" loop, then form an overhand knot below the loop, trapping the garnet oval and lampwork teardrop dangle in the loop.

5] Use one 7.25mm jump ring to attach the ceramic pendant to the previous leather cord loop. Use one 7.25mm jump ring to attach 1 lampwork rondelle link to the ceramic pendant. *Use one 7.25mm jump ring to string 1 lampwork teardrop, then use the same jump ring to attach the previous rondelle link to the tortoise link.** Repeat from * to **, attaching the tortoise link to the remaining lampwork rondelle link. Use the 10mm jump ring to string the remaining lampwork teardrop and the free end of the previous link.

6] Use one 36" piece of brown suede lace to form a lark's head knot on the 10mm jump ring; repeat to form a lark's head knot on the free loop of white leather cord. Use all 4 strands of suede lace to string the lampwork ring. Form an overhand knot on each strand of suede lace, leaving a 1-1/4" tail. ☉

RESOURCES Check your favorite bead retailer or contact: Lampwork teardrops: Unicorne Beads, (800) 833-2095, www.unicornebeads.com. Lampwork ring: Indian Creek Art Glass, www.outwest.etsy.com. Lampwork rondelles: Havana Beads, www.havana-beads.etsy.com. Rose lentil: Marsha Neal Studio, www.marshanealstudio.etsy.com. Polka-dotted lentils: Golem Design Studio, www.golemstudio.com. Tortoise: Tree Wings Studio, www.treewingsstudio.etsy.com. Ceramic pendant: BlueBerriBeads, www.blueberribeads.co.uk/shop. Leather cord and suede lace: LeatherCord USA, (877) 700-2673, www.leathercordusa.com. All other materials: Lima Beads, www.limabeads.com.



rock candy p. 26

[KARLIN JONES]

MATERIALS

6 amazonite 9-10×11-14mm smooth nuggets
4 honey yellow citrine 11×11-14mm smooth nuggets
4 prehnite 8-12×13-15mm smooth nuggets
4 amethyst 10-11×12-14mm rectangles
20 gold-plated 3mm cornerless cubes

1 gold-plated 3×100mm noodle tube
1 antiqued gold 19mm toggle clasp
2 gold-plated 2mm crimp tubes
10 1/4" of antiqued gold 10mm unsoldered chain
1 skein of pink size 8 pearl cotton cord
4" of gold 26-gauge wire
18" of gold .018 beading wire

TOOLS

Chain-nose pliers
Crimping pliers
Scissors
6" piece of cardboard

FINISHED SIZE: 26"

1] Remove one link of the chain and set it aside to use as a jump ring. To form the tassel, wrap the cotton cord around the piece of cardboard several times, keeping in mind that the finished tassel will be twice as thick. Cut the cord tail and carefully remove the cord from the cardboard. String 1 loop (folded end) of the cords through the jump ring and slide the jump ring to the center of the cords. Fold the cords in half around the jump ring. Pinch the cord strands just below the jump ring and use one 2 1/2" piece of 26-gauge wire to tightly wrap around the cords several times just below the jump ring. Cut the loops opposite the jump ring and trim the cord ends.

2] Attach one half of the clasp to one 5" piece of chain by opening and closing the chain link as you would a jump ring. Use the beading wire to string 1 crimp tube and the free end of the chain; pass back through the crimp tube and crimp.

3] String {1 cornerless cube and 1 amazonite nugget} three times. String {1 cornerless cube and 1 citrine nugget} twice. String {1 cornerless cube and 1 prehnite nugget} twice. String {1 cornerless cube and 1 amethyst rectangle} twice.

4] String 1 cornerless cube, the noodle tube, and 1 cornerless cube. Repeat Step 3, reversing the stringing sequence.

5] Repeat Step 2, reversing the stringing sequence.

6] String the jump ring attached to the tassel to the center of one 1 1/2" piece of 26-gauge wire. Center the tassel on the noodle tube and wrap both ends of the wire around the tube, securing the tassel to the tube. ☉



RESOURCES Check your favorite bead retailer or contact: All materials: Beadaholique, (866) 834-4618, www.beadaholique.com.



floral meadow p. 27

[ANNE PERRY]

MATERIALS

2 g sage green size 6° seed beads
7 coral pink-and-brown 3×10mm pressed-glass daggers
4 pale green 4mm millefiori glass rounds
6 coral pink 14×20mm pressed-glass table-cut ovals
1 rose-and-tan 26mm ceramic donut
1 purple 28mm ceramic flower pendant
4 copper 4×2mm daisy spacers
4 yellow painted brass 20mm 6-petal flowers
1 antiqued brass 8×15mm lobster clasp
4 antiqued brass 24-gauge 1" head pins
7 antiqued brass 4mm jump rings (small)
1 antiqued brass 6mm jump ring (medium)
2 antiqued brass 15mm soldered jump rings (large)
2 antiqued brass 19×5mm basketweave ribbon crimp ends
1 1/2" of chartreuse 5/8" wide cotton binding tape
36" of peridot nylon beading thread
Jewelry cement (optional)

TOOLS

2 pairs of chain- or flat-nose pliers
Round-nose pliers
Nylon-jaw pliers
Wire cutters
Scissors

FINISHED SIZE: 21 1/2"

1] Use 1 small jump ring to string 1 dagger; repeat six times for a total of 7 dagger danglers. Attach 4 dagger danglers to 1 large jump ring. Attach the 3 remaining dagger danglers to the remaining large jump ring.

2] Use 1 head pin to string 1 millefiori round, 1 yellow brass flower, and 1 daisy spacer; form a wrapped loop. Repeat entire step three times for a total of 4 yellow flower danglers.

3] Place one end of the cotton binding tape into 1 ribbon crimp end and use nylon-jaw pliers to squeeze shut; repeat. Use the medium jump ring to attach the lobster clasp to the loop of 1 ribbon crimp end.

4] Use one 12" piece of nylon beading thread to form a lark's head knot on the loop of the remaining crimp end, then form an overhand knot.

project instructions

FOR IN-DEPTH TECHNIQUE INFORMATION, SEE PAGE 77.

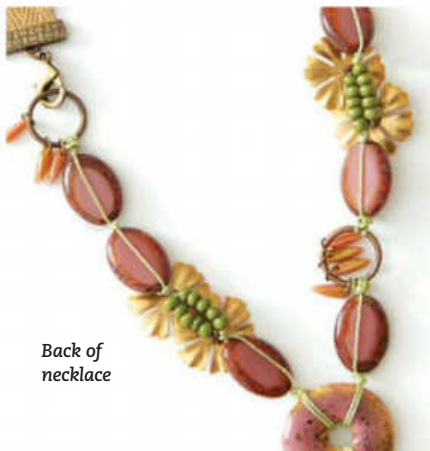
5] *Use 1 thread tail to string 1 coral pink oval, then use both tails to form an overhand knot. ** Use 1 tail to string 5 seed beads and 1 yellow flower dangle. Use the other tail to string 1 yellow flower dangle and 5 seed beads. Use both tails to form an overhand knot. Repeat from * to **.

6] Use both tails to string the first large jump ring from Step 1 and form a double-overhand knot; trim the tails. Use one 6" piece of thread to form a lark's head knot on the opposite side of the previous large jump ring. Repeat from * to **. Use both tails to string the ceramic donut; form a double-overhand knot between the previous coral pink oval and the donut. Trim the tails.

7] Use one 14" piece of thread to form a lark's head knot on the ceramic donut, opposite the previously formed bead strand; form an overhand knot.

8] Repeat Step 5. Repeat from * to **. Use both tails to form a double-overhand knot on the remaining large jump ring from Step 1; trim the tails.

9] Use one 4" piece of thread to form a lark's head knot on the ceramic donut. Use both tails to string the ceramic flower pendant, then form a double-overhand knot. Trim the tails. If desired, dab jewelry cement on this and all previous trimmed tails. ☺



Back of necklace

RESOURCES Check your favorite bead retailer or contact: Seed beads: Teresa Sullivan Studio, www.teresasullivanstudio.etsy.com. Daggers, table-cut ovals, daisy spacers, clasp, head pins, and small and medium jump rings: Beadaholique, (866) 834-4618, www.beadaholique.com. Millefiori glass rounds: Michaels, (800) 642-4235, www.michaels.com. Ceramic donut: Bead Party, www.beadparty.etsy.com. Ceramic flower pendant: Suburban Girl Studio, www.suburbangirlbeads.etsy.com. Painted brass flowers: Echo Artworks, (360) 405-4341, www.echoartworks.com. Large jump rings: The Curious Bead Shop, www.thecuriousbeadshop.etsy.com. Ribbon crimp ends: Artbeads.com, (866) 715-2323. Binding tape: Pagewood Farm, (310) 403-7880, www.pagewoodfarm.com. C-Lon nylon beading thread: Mats Beads, www.matsbeads.etsy.com.



rose blush p. 28

[CANDIE COOPER]

MATERIALS

- 2 champagne 10×7mm fire-polished rondelles (A)
- 2 tangerine 10×7mm fire-polished rondelles (B)
- 2 light pink 12×20mm faceted-glass ovals (C)
- 2 tan-and-pink 10×15mm ceramic ovals (D)
- 2 pink 18mm clay rounds with silver embellishments (E)
- 2 tan 20mm clay rounds with silver and rhinestone embellishments (F)
- 2 light pink 22mm clay rounds with silver and rhinestone embellishments (G)
- 1 marsala rose blossom trio acrylic pendant (47×38mm/53×50mm/47×38mm)
- 2 silver-and-pink 6×5mm textured rondelles (H)
- 2 pewter 10×5mm bumpy saucers (J)
- 2 bronze 12mm bumpy rounds with rhinestone spike embellishments (K)
- 4 pewter 5mm daisy spacers (L)
- 1 silver 40×44mm floral connector
- 2 silver 6mm jump rings
- 8 silver 8mm jump rings
- 4 silver 2mm crimp tubes
- 39" of tortoise shell 13×18mm acrylic oval chain
- 6" of silver 20-gauge wire
- 16" of .014 beading wire

TOOLS

- Wire cutters
- 2 pairs of chain- or flat-nose pliers
- Crimping pliers

FINISHED SIZE: 28" (shortest strand)

1] Use one 3" piece of 20-gauge wire to form a wrapped loop. String 1L, 1C, and 1L; form a wrapped loop. Use one 6mm jump ring to attach one end of the link just formed to the floral connector. Use two 8mm jump rings to attach the other end of the link to one 26" piece of chain. Repeat entire step, attaching the new link to the free end of the 26" piece of chain.

2] Use two 8mm jump rings to attach one 6½" piece of chain to the first link formed in Step 1, positioning it so it sits on the outside of the previous chain.

3] Use one 8" piece of beading wire to string 1 crimp tube and the free end of the chain added in Step 2. Pass back through the crimp tube and crimp. String 1A, 1J, 1D,

1E, 1F, 1H, 1B, 1G, and 1K. String 1 crimp tube and one side of the rose pendant; pass back through the crimp tube and crimp.

4] Repeat Step 2, using the second link formed in Step 1. Repeat Step 3. ☺



RESOURCES Check your favorite bead retailer or contact: All materials: JesseJamesBeads.com, (484) 894-5043.



key to the garden p. 29

[TERRY RICIOLI]

MATERIALS

- 8 lavender 7×5mm pressed-glass bellflowers
- 3 variegated green 8×12mm pressed-glass leaves
- 6 clear-and-pink rose 9×12mm faceted-glass rondelles
- 1 lavender 15×9mm pressed-glass butterfly
- 1 pink 34mm plastic flower button with cutouts
- 1 brass 20mm filigree flower
- 1 teal 21×62mm patinated metal key
- 3 brass-plated 22-gauge 1½" head pins
- 6 brass-plated 22-gauge 1½" eye pins
- 2 brass 5mm jump rings (mini)
- 3 brass-plated 6mm jump rings (small)
- 10 antiqued gold-plated 8mm jump rings (medium)
- 3 brass 10mm jump rings (large)
- 1 brass 4×9mm figure-eight connector
- 1 brass 5×14mm hook
- 13" of brass 3×4mm oval chain (small)
- 5" of brass 6×9mm etched oval chain (large)
- 24" of brown size D nylon beading thread

TOOLS

- Dapping block
- Dapping punch
- Hammer
- Beading needle
- Round-nose pliers
- Wire cutters
- 2 pairs of chain- or flat-nose pliers

FINISHED SIZE: 24½" (with 3¾" focal)

1] Select a hole in the dapping block that is large enough to fit the flower filigree. Select a dapping punch that is smaller than the hole in the dapping block. Place the filigree in the hole and the ball-end of the punch over the filigree, then use the hammer to tap the flat end of the punch, forming the filigree into a slightly domed shape.

2] Place 3 lavender bellflowers in the center of the filigree; thread the needle with the beading thread and sew the bellflowers onto the filigree. Place the filigree on top of the plastic flower button so that it is slightly off-center and sew the filigree to the plastic flower button. Secure the thread and trim.

3] String 1 green leaf to the center of 1 head pin and form a wrapped-loop bail, using wire cutters to trim the head off of the head pin; repeat twice. Use 1 head pin to string the lavender butterfly and form a wrapped loop. Use 1 small jump ring to string 1 lavender bellflower, 1 leaf dangle, and the butterfly dangle. Use 1 large jump ring to attach the previous small jump ring and the metal key to the bottom hole of the plastic flower button. Attach 1 large jump ring to the top hole of the plastic flower button.

4] Use 1 mini jump ring to attach the figure-eight connector to one 6½" piece of small oval chain. Attach the free end of the chain to one 2½" piece of large oval chain by opening and closing the chain link as you would a jump ring. *Use 1 small jump ring to string 1 lavender bellflower, 1 leaf dangle, and 1 lavender bellflower; attach the jump ring to the center link of the previous large oval chain.**

5] Use 1 eye pin to string 1 clear-and-pink rose rondelle; form a simple loop. Repeat five times for a total of 6 rose links.

6] ***Use 1 medium jump ring to attach 1 rose link to the free end of the previous large oval chain. Use 1 medium jump ring to attach 1 rose link to the previous rose link; repeat. Use 1 medium jump ring to attach the previous rose link to another medium jump ring.**** Use 1 large jump ring to attach the previous medium jump ring to the large jump ring attached to the top of the plastic flower button.

7] Use 1 mini jump ring to attach the hook to one 6½" piece of small oval chain. Attach the free end of the chain to one 2½" piece of large oval chain. Repeat from * to **, attaching the small jump ring to the first link of the large oval chain.

8] Repeat from *** to ****, attaching the final medium jump ring to the large jump ring added in Step 6. ☺



RESOURCES Check your favorite bead retailer or contact: Pressed-glass bellflowers, leaves, butterfly, and beading thread: Ubeadquitos, (707) 838-3953, www.ubeadquitos.com. Faceted-glass rondelles, plastic flower button, metal key, head pins, eye pins, and 5 and 6mm jump rings: Jo-Ann Fabric and Craft, (888) 739-4120, www.joann.com. 8 and 10mm jump rings: Fire Mountain Gems and Beads, (888) 781-3559, www.firemountaingems.com. All other materials: Beverly's, (707) 521-2196, www.beverlys.com.



lilac patch p. 30

[REJETTA SELLERS]

MATERIALS

1 pistachio green 6×18mm vintage-glass leaf charm
1 lavender-and-green 30mm lampwork lentil
78 light plum 5mm pearl rounds
1 matte olivine AB 11mm glass shank button
6 purple gladiola 12×7mm glass flower buttons
6 brass 24-gauge 2" ball-end head pins
1 brass 24-gauge 2" eye pin
4 brass 4mm jump rings
1 brass 16mm etched jump ring
¾" of brass 3.5×4mm oval chain
3' of lavender 4-ply Irish waxed linen cord
5" of lavender 1.5mm cotton cord
Jewelry cement

TOOLS

Scissors
Awl
2 pairs of chain- or flat-nose pliers
Round-nose pliers
Wire cutters

FINISHED SIZE: 21" (with 3" focal)

▲ **Tips:** When forming knots in the waxed linen cord after each pearl strung, you'll want to place the knots as close to the pearls as possible. You'll also want to occasionally wash your hands because the waxy coating on the cord can build up on your hands and then transfer to the pearls.

1] Use the waxed linen cord to tie an overhand knot on one 4mm jump ring. Tie a second overhand knot below the first.

2] String 1 pearl, then tie a loose overhand knot. Place the awl inside the knot and pull the loose end of the cord to slide the knot against the pearl. Use your thumbnail to push against the knot and slide it off of the awl. Repeat entire step seventy-seven times.

3] Repeat Step 1. Trim the tail on each end of the pearl strand and dab the knots with jewelry cement; let dry.

4] Fold the cotton cord in half and string 1 tail through the jump ring on one end of the pearl strand. Use both tails to form an overhand knot; dab the knot with jewelry cement and let dry. Slide the previous jump ring so it is snug against the knot.

5] Use both strands of the folded cotton cord to string the matte olivine button. Slide the button toward the knot and use one 4mm jump ring to attach the shank of the button to the jump ring from Step 4.

6] Attach one end of the chain to the eye pin. Use 1 head pin to string 1 glass flower, then form a simple loop that attaches to 1 chain link; repeat five times to attach the remaining glass flowers at random intervals along the length of chain. Use one 4mm jump ring to attach the leaf charm to 1 chain link near the bottom.

7] Use the 16mm jump ring to string the 4mm jump ring attached to the free end of the pearl strand. Use the eye pin to string the lampwork lentil; form a wrapped loop that attaches to the 16mm jump ring.

8] To latch the necklace, string the loop of the cotton cord through the 16mm jump ring; fold the cord over and loop it around the matte olivine button. ☺

RESOURCES Check your favorite bead retailer or contact: Leaf charm: Who Knows What, www.whoknowswhat.etsy.com. Lampwork lentil: Moogin Mindy, www.mooginmindy.etsy.com. Pearls: Vintage Bead Girl, www.vintagebeadgirl.etsy.com. Matte olivine button, flower buttons, 16mm jump ring, and chain: Lima Beads, www.limabeads.com. Head pins and eye pin: Hobby Lobby, (800) 888-0321, www.hobbylobby.com. 4mm jump rings: Patina Queen, www.patinaqueen.etsy.com. Irish waxed linen cord: Jewelry Accord, www.jewelryaccord.etsy.com. Similar cotton cord: Impedimenta Vintage, www.impedimentavintage.etsy.com.



little birdies p. 31

[MARTHA THOMAS]

MATERIALS

2 lilac 7×10mm pressed-glass leaves
2 teal 7×10mm pressed-glass leaves
4 pink 10×6mm pressed-glass bellflowers
6 lavender 14mm pressed-glass table-cut flowers
3 teal 14mm pressed-glass table-cut flowers

- 2 lavender 10mm lampwork teardrops
- 2 lavender-and-evergreen 12×15mm lampwork spools
- 2 matte lilac 18mm polka-dot lampwork discs
- 2 orchid 22mm lampwork flowers
- 1 brown 41×19mm ceramic twig bead
- 1 lilac 25×11mm polymer clay bird bead
- 1 rose 26×12mm polymer clay bird bead
- 1 violet 30×13mm polymer clay bird bead
- 7 antiqued brass 3mm corrugated melons
- 2 antiqued copper 4mm corrugated melons
- 1 antiqued brass 10×15mm lobster clasp
- 4 antiqued brass 22-gauge 1½" head pins
- 6 antiqued brass 5.25mm jump rings (small)
- 4 antiqued brass 9.5mm etched jump rings (large)
- 4 antiqued copper 2mm crimp tubes
- 4 antiqued copper 4mm crimp covers
- 8" of antiqued brass 8mm leaf chain
- 24" of walnut brown 7-ply Irish waxed linen cord
- 4" of brass 18-gauge wire
- 12" of antiqued copper .019 beading wire

TOOLS

- Round-nose pliers
- 2 pairs of chain- or flat-nose pliers
- Wire cutters
- Scissors
- Crimping pliers

FINISHED SIZE: 19½" (with 4½" focal)

1] Use the 18-gauge wire to form a wrapped loop. String one 4mm copper melon, the ceramic twig, all 3 polymer clay birds (largest to smallest), and the remaining 4mm copper melon; form a wrapped loop. Use 1 small jump ring to attach one 2" piece of chain to the first (bottom) loop of the focal just formed. Use 1 head pin to string 1 pressed-glass leaf and form a wrapped loop; repeat three times. *Use 1 small jump ring to attach 1 leaf dangle to the free end of the chain.** Repeat from * to ** three times, attaching the leaves at random points along the chain.

2] Use 1 large jump ring to string 1 lampwork teardrop, then string the jump ring to the center of one 12" piece of waxed linen cord; form an overhand knot. ***Use 1 cord tail to string 1 lampwork flower from front to back, then use the other tail to string the same flower from back to front. Use both tails to form an overhand knot below the flower.**** Use both tails to string 1 lampwork spool and form an overhand knot. Repeat from *** to **** using 1 lampwork disc, then form an overhand knot on the top loop of the pendant, leaving each tail at least 1" long. Use one tail to string 1 bellflower, snugging the bellflower up to the previous knot, then form an overhand knot and trim the tail; repeat.

3] Repeat Step 2 to form the other half of the necklace, replacing the lampwork teardrop on the jump ring with 1 leaf chain link.

4] Use one 5" piece of beading wire to string 1 crimp tube and the jump ring in Step 2. Pass back through the crimp tube and crimp. Cover the crimp tube with

1 crimp cover. String {1 table-cut flower and one 3mm brass melon} twice. String 1 table-cut flower, 1 crimp tube, and 1 large jump ring. Pass back through the crimp tube; crimp and cover.

5] Use one 7" piece of beading wire to string 1 crimp tube and the jump ring in Step 3. Pass back through the crimp tube; crimp and cover. String {1 table-cut flower and one 3mm brass melon} five times. String 1 table-cut flower, 1 crimp tube, and 1 large jump ring, first stringing 1 lampwork teardrop and one 6" piece of chain onto the jump ring. Pass back through the crimp tube; crimp and cover. Use 1 small jump ring to attach the clasp to the free end of the chain. ◉

RESOURCES Check your favorite bead retailer or contact: Pressed-glass leaves and flowers: Arte Bella Surplus, www.artebellasurplus.etsy.com. Lampwork teardrops: Unicorn Beads, (800) 833-2095, www.unicornbeads.com. Lampwork spools: Beads of Passion, www.beadsofpassion.etsy.com. Lampwork discs: Soul Silver, www.soulsilver.etsy.com. Lampwork flowers: FusionBeads.com, (888) 781-3559. Ceramic twig: Starry Road Studio, www.ktotten.etsy.com. Polymer clay birds: Humble Beads, www.humblebeads.etsy.com. All other materials: Lima Beads, www.limabeads.com.



moon gazing p. 33

[LORALEE KOLTON]

MATERIALS

- 1 clear 7×5mm crystal rondelle
- 14 gunmetal 5mm hematite hexagons
- 1 black 46mm etched blacklip shell pendant
- 1 black-and-white 20mm dotted porcelain coin
- 1 whitewash 32×25mm ceramic crescent moon bead
- 1 bronze 20mm eye coin pendant with sapphire inset
- 1 antiqued brass 10×20mm hook clasp
- 2 antiqued brass 7mm jump rings
- 4 oxidized copper 2mm crimp tubes
- 10½" of oxidized copper 3mm chain
- 10" of oxidized copper 18-gauge wire
- 7" of silver .019 beading wire

TOOLS

- Round-nose pliers
- 2 pairs of chain- or flat-nose pliers
- Crimping pliers
- Wire cutters
- Nylon-jaw pliers
- Hammer

FINISHED SIZE: 15" (with 4" focal)

1] Layer the bronze eye pendant on top of the shell pendant so that the holes align. Use the 18-gauge wire to form a wrapped-loop bail that attaches to both pendants. String the ceramic moon (outside curve first), the dotted porcelain coin, and the crystal rondelle; form a wrapped loop, coiling the wire down the top half of the crystal rondelle to create a bead cap.

2] Use 1 jump ring to attach the clasp to one 5¼" piece of chain.

3] Use the beading wire to string 2 crimp tubes and the free end of the previous chain; pass back through the crimp tubes and crimp. String 7 hematite hexagons, the pendant formed in Step 1, and 7 hematite hexagons. String 2 crimp tubes and one 5¼" piece of chain; pass back through the crimp tubes and crimp. Attach the remaining jump ring to the free end of the previous chain. ◉

RESOURCES Check your favorite bead retailer or contact: Swarovski crystal rondelle: Fire Mountain Gems and Beads, (800) 355-2137, www.firemountaingems.com. Hexagons: Beadniks, www.beadniksvt.etsy.com. Shell pendant: Lillypilly Designs, (303) 543-8673, www.lillypillydesigns.com. Dotted porcelain coin: Round Rabbit, www.roundrabbitextra.bigcartel.com. Ceramic moon: Starry Road Studio, www.ktotten.etsy.com. Bronze eye coin pendant: Enchanted Adornments, www.cynthia-thornton.etsy.com. Clasp: Missficklemedia, www.missficklemedia.etsy.com. Jump rings and crimp tubes: Lima Beads, www.limabeads.com. Chain: Gold Swan, www.goldswan.etsy.com. 18-gauge wire: Artwear Elements, www.artwearelements.etsy.com. Beading wire: Soft Flex Co., (866) 925-3539, www.softflexcompany.com.



maker of dreams p. 34

[LISA MARIE BALDOCK]

MATERIALS

- 12 black-lined transparent aqua AB size 8° seed beads
- 2 peach AB 4-6×22-29mm quartz spikes
- 2 light blue AB 5×15mm quartz spikes
- 1 crystal 8×40mm quartz spike
- 4 blue 10-17×3-5mm kyanite nuggets
- 1 brown 21×68mm wood oval pendant

1 antiqued brass 7×22mm "believe" charm
 Computer paper
 48" of antique gold 3mm flat leather
 6½" of black 24-gauge craft wire
 5½" of copper 24-gauge craft wire
 10" of copper 14-gauge dead-soft wire
 Decoupage medium
 Metal wax (optional)

TOOLS

Jewelry file
 Heavy-duty wire cutters
 Round-nose pliers
 Bench block
 Ball-peen hammer
 Handheld butane blow torch and fire brick (optional)
 Wire cutters
 Scissors
 Paintbrush

FINISHED SIZE: 24" (with 5¾" focal)

1] Use the jewelry file to file both ends of the 14-gauge wire until they are smooth. Form the wire around a small cylindrical object and flare out both ends slightly. Use round-nose pliers to form a loop on both ends of the wire. Place the wire on the bench block and use the flat side of the ball-peen hammer to flatten and harden the wire. Use the ball end of the hammer to add texture. If desired, use the blow torch to add a patina finish to the wire, then seal with metal wax. Use one 18" piece of copper 24-gauge wire to wrap around the "neck" of the copper frame just formed.

2] Print "maker of dreams" on your computer (alternately, use scrapbook paper with words). Cut out the words and use decoupage medium to affix them to the front of the wood pendant, sealing the top of the paper with a layer of decoupage.

3] Use one 18" piece of black wire to string 4 seed beads, then *wrap the wire three or four times around the wood pendant, positioning the wire so the beads sit above the word "maker."**

4] String 4 seed beads and repeat from * to ** so the beads sit above the word "of." Repeat entire step, positioning the beads above the word "dreams." Trim any excess wire and secure the ends.

5] Use one 18" piece of black wire to string the hole in the wood pendant and form a freeform wire-wrapped bail that attaches to the bottom of the copper frame formed in Step 1.

6] Use one 6" piece of black wire to string the "believe" charm, then form a freeform wrapped-loop bail. String all of the kyanite nuggets (largest to smallest), then form a wrapped loop that attaches to the copper frame, directly to the left of the wood pendant.

7] Use one 6" piece of black wire to wrap around the top of 1 peach quartz spike and form a wrapped loop that attaches to the copper frame, to the left of the previous dangle. Repeat entire step using one 12"

piece of 24-gauge copper wire and 1 light blue quartz spike.

8] Use one 24" piece of 24-gauge copper wire to wrap around the top of the crystal quartz spike and form a freeform wire-wrapped bail that attaches to the copper frame, directly to the right of the wood pendant. Repeat Step 7 on the right side of the necklace.

9] String 1 loop on the copper frame to the center of the leather cord. Use one 12" piece of black wire to wrap around both cords next to the loop on the frame. String the free end of both tails through the remaining loop on the copper frame and fold the ends under, leaving a ½" tail. Use one 12" piece of black wire to wrap around the cord tails to secure. ◉

RESOURCES Check your favorite bead retailer or contact: Seed beads, wire, and Renaissance wax: FusionBeads.com, (888) 781-3559. Peach quartz spikes: Love of Jewelry, www.loveofjewelry.etsy.com. Light blue quartz spikes: BeadXpert, www.beadxpert.etsy.com. Crystal quartz spike: BijjiBijoux, www.bijjibijoux.etsy.com. Kyanite: Beacon Beads, www.beaconbeads.etsy.com. Wood pendant: Natural Organic Crafts, www.naturalorganiccrafts.etsy.com. "Believe" charm: SugaBeads, www.sugabeads.etsy.com. Leather: The Curious Bead Shop, www.the curiousbeadshop.etsy.com.



perched in the soul p. 35

[CLAIRE LOCKWOOD]

MATERIALS

3 black Picasso size 6° seed beads
 6 matte black 5-7×6-9mm striped glass barrels
 4 yellow 6×3mm lampwork rondelles
 1 black-and-yellow striped 10×20mm glass trade bead
 1 yellow 14×10mm Hebron-glass square nugget
 1 black-and-yellow 27×12mm lampwork bird
 1 brown-and-white 12mm ceramic round
 1 black-and-yellow 18×10mm ceramic rondelle
 1 black-and-yellow 20×65mm spotted ceramic lily pendant with interior loop
 1 gunmetal 4×9mm figure-eight connector
 2 gunmetal 5×27mm feather charms
 1 gunmetal 12mm bead cap
 1 antiqued copper 15mm ring
 1 antiqued black 22×27mm metal oval link
 39" of black 2mm leather cord
 8" of dark copper 20-gauge oxidized copper wire

TOOLS

2 pairs of chain- or flat-nose pliers
 Round-nose pliers
 Wire cutters
 Scissors

FINISHED SIZE: Adjustable to 30"

(with 6" focal)

1] Use 2 pairs of pliers to twist each end of the figure-eight connector so the loops sit at a 90-degree angle from one another. Attach 1 feather charm to 1 loop; attach the other loop to the loop on the interior of the lily pendant.

2] Use one 2" piece of wire to form a simple loop that attaches to the loop on the top of the lily pendant. String the bead cap (wide end first) and form a wrapped loop that attaches to the oval link.

3] Use one 3" piece of wire to form a simple loop, adding the remaining feather charm to the loop before closing, and attaching the loop to the oval link, opposite the previous wrapped loop. Use the end of the previous wire to string the Hebron nugget, the black-and-yellow rondelle, the lampwork bird, and 1 seed bead; form a wrapped loop that attaches to the copper ring.

4] Use the leather cord to form a lark's head knot on the previous copper ring, opposite the previous wrapped loop. Use both tails of the cord to string the ceramic round.

5] Use 1 cord tail to string 1 seed bead, 1 striped barrel, 1 yellow rondelle, 1 striped barrel, 1 yellow rondelle, and 1 striped barrel; repeat using the other cord tail.

6] Use both cord tails to string the striped trade bead, then form an overhand knot on each tail, about ½" from the ends.

Note: Slide the trade bead up and down to adjust the length of the necklace. ◉



RESOURCES Check your favorite bead retailer or contact: Seed beads, figure-eight connector, feather charms, similar bead cap and copper ring, and leather cord: Lima Beads, www.limabeads.com. Black striped barrels and lampwork rondelles: Yuki Designs, www.yukidesigns.etsy.com. Trade bead: Happy Mango Beads, (970) 532-2546, www.happymangobeads.com. Hebron nugget: Ethnic Bead Shop, www.ethnicbeadshop.etsy.com. Lampwork bird: Jewelry Beads by Katie, www.jewelrybeadsbykatie.etsy.com. Ceramic round: Golem Design Studio, www.golemstudio.com. Ceramic rondelle and lily pendant: Something to do Beads, www.somethingtodobeads.etsy.com. Oval link: Alchemy Shop, www.alchemystudio.etsy.com. Similar wire: The Curious Bead Shop, www.the curiousbeadshop.etsy.com.



eye of the beholder p. 36

[LORELEI EURTO]

MATERIALS

- 1 g purple size 15° cut Japanese seed beads
- 24 halo ethereal 8mm pressed-glass melons
- 1 striped blue 13×27mm lampwork bead
- 1 white-and-brown 20×25mm ceramic hamsa bead
- 1 clear 10×60mm glass vial pendant with turquoise nuggets and paper message
- 2 silver 5×2mm rondelles
- 1 pewter 45×28mm eye pendant
- 1 silver 7mm jump ring
- 4 silver 2mm crimp tubes
- 2 steel 3mm pan-head machine screws with hex nuts
- 13" of antiqued silver 8×10mm soldered oval chain
- 20" of walnut brown 2mm deerskin leather lace
- 8" of silver 20-gauge wire
- 16" of silver .019 beading wire

TOOLS

- Crimping pliers
- Flush cutters
- Round-nose pliers
- Hammer

FINISHED SIZE: 28" (with 3½" focal)

- 1]** Use one 8" piece of beading wire to string 1 crimp tube, 15 seed beads, and one 6½" piece of chain. Form a loop with the seed beads, pass back through the crimp tube, and crimp. String {1 melon round and 1 seed bead} eleven times. String 1 melon round, 1 rondelle, 1 crimp tube, 15 seed beads, and the top-left loop of the eye pendant. Form a loop with the seed beads, pass back through the crimp tube, and crimp.
- 2]** Repeat Step 1, attaching the second beaded strand to the top-right loop of the eye pendant.
- 3]** Use one 4" piece of 20-gauge wire to form a simple loop that attaches to the bottom-left loop of the eye pendant. String the lampwork bead, then fold the wire tail up the back side of the bead. Use the wire tail to form a messy wrapped loop between the top of the bead and the simple loop.
- 4]** Use the jump ring to attach the vial pendant to the bottom-center loop of the eye pendant.
- 5]** String the hamsa bead to the center of one 4" piece of 20-gauge wire and form a messy wrapped loop that attaches to the bottom-right loop of the eye pendant.

6] String the free end of 1 piece of chain to the center of the leather; form an overhand knot. Use 1 leather tail to string the free end of the remaining piece of chain; use both leather tails to form an overhand knot, 2½" from the ends.

7] Insert 1 machine screw into the hole on one end of the eye pendant, then thread 1 hex nut onto the back of the screw; repeat. Use flush cutters to trim the excess length of both screws and use the hammer to flatten. ☺

RESOURCES Check your favorite bead retailer or contact: Seed beads: FusionBeads.com, (888) 781-3559. Melon rounds: Five Sisters, www.fivesisters.etsy.com. Lampwork bead: Soul Silver, www.soul.silver.etsy.com. Hamsa bead: Beadahs, (310) 395-0033, www.beadahs.com. Vial pendant: Swoon Dimples, www.swoondimples.etsy.com. Silver rondelles: Hand of the Hills, www.hohbead.com. Eye pendant: Green Girl Studios, (828) 298-2263, www.greengirlstudios.com. Jump ring: AD Adornments, (773) 338-3818, www.adornments.com. Crimp tubes: Beadalon (wholesale only), (866) 423-2325, www.beadalon.com. Screws: Micro Fasteners, (610) 438-6177, www.microfasteners.com. Chain: Lima Beads, www.limabeads.com. Leather lace: LeatherCord USA, (877) 700-2673, www.leathercordusa.com. 20-gauge wire: Lowes, (800) 445-6937, www.lowes.com. Beading wire: Soft Flex Co., (866) 925-3539, www.softflexcompany.com.



in good hands p. 37

[KRISTINA HAHN ELENIK]

MATERIALS

- 5 teal Picasso 8×6mm fire-polished rondelles
- 1 teal 7×6mm lampwork rondelle
- 1 deep yellow 12×8mm lampwork rondelle
- 6 antiqued silver 5×3mm bumpy heishi
- 1 antiqued silver 5×7mm bumpy cylinder
- 1 antiqued silver 12mm puffy cross bead
- 1 aged pewter 15×24mm hamsa angel charm
- 1 antiqued silver 19mm toggle clasp
- 5 antiqued brass 22-gauge 1½" eye pins
- 11 antiqued brass 4.25mm jump rings (small)
- 2 silver 6mm textured jump rings
- 5 antiqued brass 7.25mm jump rings (medium)
- 2 silver 8mm jump rings
- 1 antiqued brass 9mm textured jump ring (large)
- 2 antiqued brass 4mm compression rivet sets
- 20" of dark brown 1mm waxed cotton cord
- 22" of dark brown 5mm flat leather

TOOLS

- 2 pairs of chain- or flat-nose pliers
- Round-nose pliers
- Wire cutters
- Bench block
- Rivet setter
- Leather hole punch
- Hammer
- Scissors
- Marker

FINISHED SIZE: 30½"

1] Use 1 silver 6mm jump ring to attach 1 silver 8mm jump ring to the bar half of the clasp. Use the waxed cotton cord to form an overhand knot on the previous 8mm jump ring. Use the cotton cord to string 1 medium brass jump ring, 4" from the previous knot. Use both cord ends to tie a double-overhand knot, forming a loop that secures the previous medium brass jump ring.

2] Use the free end of the cotton cord to tie an overhand knot about ⅛" from the previous knot. *String 1 heishi; form an overhand knot.** Repeat from * to **. String the cross bead; form an overhand knot. String the deep yellow rondelle; form an overhand knot. Repeat from * to ** three times. String the bumpy cylinder; form an overhand knot. String the teal lampwork rondelle; form an overhand knot. Repeat from * to **.

3] String the silver 8mm jump ring from Step 1 and form a double-overhand knot. Trim excess cord if necessary.

4] Use 1 small brass jump ring to attach the hamsa angel charm to the loop used to secure the medium brass jump ring from Step 1.

5] Attach 1 eye pin to 1 small brass jump ring. String 1 teal fire-polished rondelle and form a simple loop that attaches to 1 small brass jump ring. Repeat entire step four times for a total of 5 teal rondelle links.

6] Attach 1 teal rondelle link to the medium brass jump ring from Step 1. Use 1 medium brass jump ring to attach 1 teal rondelle link to the previous teal rondelle link; repeat three times. Attach the large brass jump ring to the last teal rondelle link used in this step.

7] Use the leather hole punch to punch a hole 5mm from one end of the leather. String this end of the leather through the large brass jump ring from Step 6 and fold it under the leather so there is about ¾" of overlap. Use the marker to mark a hole on the overlapped leather that lines up with the previous hole, then punch a hole at the mark. Insert the post of 1 rivet set through the holes in the leather, from bottom to top. Place the cap over the post and use your fingers to snap the rivet ends together. Place the leather on the bench block and the rivet setter over the cap. Strike the setter with the hammer to set the rivet.

8] Repeat Step 7 on the other end of the leather, stringing the leather through the

remaining silver 8mm jump ring. Use the remaining silver 6mm jump ring to attach the previous silver 8mm jump ring to the toggle half of the clasp. ©

RESOURCES Check your favorite bead retailer or contact: Teal fire-polished rondelles: Arte Bella Surplus, www.artebellasurplus.etsy.com. Teal lampwork rondelle: Fay Wolfenden Designs, www.torchfairy.blogspot.ca. Deep yellow lampwork rondelle: Delta Beads, www.stores.ebay.com/delta_beads. Heishi, cross bead, and waxed cotton cord: Fire Mountain Gems and Beads, (888) 355-2137, www.firemountaingems.com. Bumpy cylinder, eye pins, and jump rings: Vintaj, www.vintaj.com. Hamsa angel charm: Elements of Antiquity, (800) 495-4046, www.elementsofantiquity.com. Clasp: Nunn Design (wholesale only), (800) 761-3557, www.nunnndesign.com. Rivet sets: Lima Beads, www.limabeads.com. Leather: Antelope Beads, (720) 287-2026, www.antelopebeads.com.



telesma p. 38

[SAMANTHA SLATER]

MATERIALS

1 crystal bronze 7×30mm crystal (Crystalactite) pendant
 44 brown 3×2mm smoky quartz faceted rondelles
 102 blue/green 6mm amazonite faceted rounds
 1 antiqued brass-plated 10mm Om charm
 1 antiqued gold-plated 16×23mm Buddha charm
 1 antiqued gold-plated 21×13mm elephant charm
 1 antiqued gold-plated 21mm hammered ring
 1 gold 23mm toggle clasp
 1 gold-filled 22-gauge 2" head pin
 1 gold-plated 21-gauge 1" eye pin
 1 gold-filled 4mm jump ring (small)
 4 gold-filled 7mm jump rings (medium)
 1 gold 10mm jump ring (large)
 4 gold-filled 2mm crimp tubes
 4 gold-filled 3mm crimp covers
 1¾" of brass 4mm rolo chain
 28" of brass .015 beading wire

TOOLS

2 pairs of chain- or flat-nose pliers
 Round-nose pliers
 Wire cutters
 Crimping pliers

FINISHED SIZE: 27" (with 2½" focal)

1] Attach the elephant charm to 1 loop of the eye pin. String 1 amazonite round and form a simple loop. Use 1 medium jump ring to attach the simple loop to the gold ring.

2] Use the small jump ring to attach the Om charm to one 1¼" piece of chain. Use 1 medium jump ring to attach the free end of the chain to the gold ring.

3] Use 1 medium jump ring to attach the Buddha charm to the gold ring. Use the large jump ring to attach the crystal pendant to the gold ring.

4] Use the head pin to string 1 amazonite round and form a wrapped loop that attaches to one ½" piece of chain. Use 1 medium jump ring to attach the free end of the chain to the gold ring.

5] Use one 16" piece of beading wire to string 1 crimp tube and the top of the gold ring; pass back through the crimp tube and crimp. Cover the crimp tube with 1 crimp cover. String {2 smoky quartz rondelles and 5 amazonite rounds} ten times. String 2 smoky quartz rondelles, 1 crimp tube, and one half of the clasp. Pass back through the crimp tube; crimp and cover.

6] Repeat Step 5. ©

RESOURCES Check your favorite bead retailer or contact: All materials: FusionBeads.com, (888) 781-3559.



tranquility p. 39

[REJETTA SELLERS]

MATERIALS

1 g garnet size 11° seed beads
 47 light green 10mm quartzite rounds
 2 brown 15mm Rudraksha rounds
 3 brown nut 15×18mm flat ovals
 1 pewter 36×40mm koi pendant
 1 pewter 15mm fish shank button
 1 silver-plated 2×58mm twig connector
 5 brass 2mm crimp tubes
 1 pair of Mala counters with prayer beads and tassels on black cord
 18" of dark garnet cotton floss
 36" of bronze .015 beading wire

TOOLS

Wire cutters
 Scissors
 Crimping pliers

FINISHED SIZE: 26" (with 6 ½" focal)

Tip: Before you begin, join the ends of the cords on the Mala counters together using a lark's head knot.

1] Cut two 12" pieces of beading wire. Use both wires to string 1 crimp tube, but do not crimp the tube; slide the tube so it is 2" from the ends of the wires. Form a woven bail using the cotton floss and the 2" wire tails by first folding the cotton floss in half, then in half again. Lay the 2 wire tails in the center of the folded floss so that you have a total of 4 pieces to braid with (2 doubled-up floss pieces and 2 wires). Place the right side of the folded floss over the right wire tail and under the left wire tail. Place the left side of the folded floss over the left wire tail and under the right wire tail. Continue braiding in this manner until you have braided for 1". Use the woven section to string the top of the pewter pendant. String the 2 wire tails back up through the crimp tube and crimp. Tie the floss tails in a double knot around the crimp tube and trim.

2] Use the joined Mala counters to form a lark's head knot on the bottom of the pewter pendant.

3] Use both beading wires from Step 1 to string 1 Rudraksha round. *Use the left wire to string 3 seed beads. String {1 quartzite round and 1 seed bead} fourteen times. String 1 quartzite round.** String 1 nut oval, 1 Rudraksha round, 1 crimp tube, and one end of the twig connector; pass back through the crimp tube and crimp. Repeat from * to ** using the right wire.

4] String 1 crimp tube, 5 seed beads, the shank button, and 5 seed beads; pass back through the crimp tube and crimp.

5] Use one 12" piece of beading wire to string 1 crimp tube, 5 seed beads, the shank button, and 5 seed beads; pass back through the crimp tube and crimp. String 2 nut ovals. String {1 quartzite round and 1 seed bead} seventeen times. String 1 crimp tube and the free end of the twig connector; pass back through the crimp tube and crimp.

RESOURCES Check your favorite bead retailer or contact: Seed beads, crimp tubes, and wire: Hobby Lobby, (800) 888-0321, www.hobbylobby.com. Quartzite: Michaels, (800) 642-4235, www.michaels.com. Rudraksha rounds: Nomad Bead Merchants, (303) 786-9746, www.nomadbeads.com. Nut ovals: Fire Mountain Gems and Beads, (800) 355-2137, www.firemountaingems.com. Green Girl pendant and button, Nunn Design twig connector, and ear wires: Lima Beads, www.limabeads.com. Mala counters: Woman Shops World, www.womanshopsworld.etsy.com. Cotton floss: Jo-Ann Fabric and Craft, (888) 739-4120, www.joann.com.



sacred spaces p. 40

[ANNE PERRY]

MATERIALS

- 1 amber 25×12mm carved petrified wood bear bead
- 1 white-and-brown 22×18mm clay dove charm
- 1 silver-plated 12×25mm turtle charm
- 1 copper 17×20mm hamsa charm
- 2 silver 17×25mm religious medals
- 1 brass 32×37mm "good luck"/4-leaf clover charm
- 1 antiqued brass 5×9mm pinch bail
- 1 copper 7×13mm hook
- 1 brass 22-gauge 1½" head pin
- 11 copper 5mm jump rings
- 3 antiqued brass 6mm jump rings
- 16" of copper 4×8mm long-and-short oval chain
- 7½" of copper 24-gauge wire
- 34½" of copper 18-gauge wire

TOOLS

- Round-nose pliers
- 2 pairs of chain- or flat-nose pliers
- Wire cutters

FINISHED SIZE: Adjustable to 24"

(with 3¼" focal)

1] Use one 7" piece of 18-gauge wire to form a slight curve. Form a simple loop on each end of the wire. *Use one 5½" piece of 18-gauge wire to form a curved shape around a cylindrical object about 1½" in diameter (such as a spice bottle). Form a simple loop on each end of the wire that attaches to the previous 7" piece of wire.** Note: Before attaching the second simple loop to the 7" wire, slide the hamsa charm onto the 7" wire so it is centered within the curved wire just formed. Repeat from * to ** twice. Note: Before attaching the second curved wire, slide six 5mm jump rings onto the 5½" piece of wire. This becomes the top row.

2] Use one 5mm jump ring to attach the turtle charm to the 7" wire from Step 1 so that it is centered within the second curved wire on the top row. Use the head pin to string the bear bead and form a wrapped loop that attaches to the 7" wire so that it is centered within the third curved wire on the top row. Use one 1½" piece of 24-gauge wire to wrap around the 7" wire on both sides of the hamsa charm, securing it to the center of the 7" wire within the first curved wire; repeat twice, securing the turtle charm and the bear bead to the center of their respective curved wires.

3] Repeat from * to **, attaching the curved wire to the first and second curved wires on the top row. Repeat from * to **, attaching the curved wire to the second and third curved wires on the top row. Note: This becomes the bottom row.

4] Attach one 5mm jump ring to 1 religious medal. Wrap one end of one 1½" piece of 24-gauge wire around the bottom-right side of the first curved wire on the top row. String the jump ring attached to the religious medal, then wrap the free end of the wire around the bottom-left side of the second curved wire on the top row. Repeat entire step to attach the remaining religious medal between the second and third curved wires on the top row. Note: The religious medals will be centered between the curved wires on the bottom row.

5] Attach the pinch bail to the "good luck"/4-leaf clover charm. Use one 6mm jump ring to attach the loop of the pinch bail to the second curved wire in the top row, between the 6 jump rings added in Step 1.

6] Use one 6mm jump ring to attach one 4½" piece of chain to the left loop on the 7" piece of wire. Use one 5mm jump ring to attach the hook to the free end of the chain.

7] Use one 6mm jump ring to attach one 11½" piece of chain to the right loop on the 7" piece of wire. Use one 5mm jump ring to attach the dove charm to the free end of the chain. ◉

RESOURCES Check your favorite bead retailer or

contact: Similar carved bear: New Mexico Bead and Fetish, www.nmbeadandfetish.com. Turtle and hamsa charms, bail, and jump rings: Beadaholique, (866) 834-4618, www.beadaholique.com. Similar religious medals: Catholic Saint Medals, www.catholicsaintmedals.com (or search Ebay or Amazon). Good luck charm: Check your local antiques store or flea market. Copper hook and brass head pin: Fusion Beads.com, (888) 781-3559. Chain: Artbeads.com, (866) 715-2323. Wire: Michaels, (800) 642-4235, www.michaels.com.



field notes p. 45

[SHARON BORSAVAGE]

MATERIALS

- 1 sterling silver-plated 6×3mm rondelle with crystal inlay
- 16 cream 8mm swirl shell rounds

- 1 antiqued copper 8×4mm bumpy spacer
- 1 antiqued copper 20mm round flat tag
- 1 antiqued copper 24mm Tree of Life charm
- 1 antiqued copper 4mm jump ring
- 6 antiqued copper 8mm jump rings
- 2 nickel-plated ½" leather rivet and cap sets
- 1 vintage-looking paper bird image
- 5 vintage book pages or scrapbook paper with text
- Cream cardstock paper
- 13½" of antiqued copper 4×5mm textured chain
- 1 dark brown 2½ × 2" piece of leather
- 4' of copper 20-gauge wire
- 10" of copper 18-gauge wire
- 3¾" of copper 14-gauge wire
- Decoupage medium
- 2-part epoxy resin

TOOLS

- Scissors
- Paintbrush
- Sandpaper block
- Brown stamp pad
- Plastic bag
- Plastic gloves
- Small plastic measuring cup
- Craft stick
- Sponge brush
- Leather hole punch
- 1.8mm metal hole punch
- Bench block
- Leather rivet setter
- Rawhide mallet
- 2 pairs of chain- or flat-nose pliers
- Wire cutters
- Round-nose pliers
- Chasing hammer
- Metal stamp with small tree or leaf design
- Brass hammer

FINISHED SIZE: 18½"

🔥 Tips: It's easy to customize this necklace to your liking by using clip art or a scrapbook-paper image. If desired, use liver of sulfur to add a patina to all of the wire before starting.

1] Cut the bird image to 2" wide by 2¼" long; cut the cardstock to 2" wide by 2¾" long. Use the paintbrush to coat the image side of the bird paper and one side of the cardstock with decoupage medium; let dry completely.

2] Cut 12–14 pieces of the book pages so that they measure 2" wide by 2¾" long. Remove some of the edges and corners to add a worn look. Use the sandpaper block to sand the edges, then use the stamp pad to add brown ink to the edges.

3] Place the bird paper and the piece of cardstock on the plastic bag with the decoupage side facing up. Put on the plastic gloves and mix 1 ounce of resin according to package directions. Dip the sponge brush into the cup of resin and, starting in the center of the paper, quickly wipe the resin onto the paper and outward toward the edges. Let dry for at least 12 hours. Remove the papers from the bag.

4] Use the leather hole punch to punch 1 hole in each corner of the piece of leather, making sure the holes align when the leather is folded in half crosswise. Use the 1.8mm hole punch to punch 1 hole in the leather along the center of one short edge. Stack the papers in the following order: cardstock (resin side down), book pages, and bird image (resin side up). Use the 1.8mm hole punch to punch 2 holes $\frac{3}{4}$ " from the top of each paper so they align with the holes in the leather when the leather is folded crosswise.

5] Place the leather on the bench block with the wrong side facing up. Insert the post of 1 rivet set through the bottom left hole on one short end of the leather, from bottom to top; repeat on the bottom right hole of the same short end. Slip all of the papers onto the rivets, then fold the leather over the top, leaving a small gap above the papers, and insert the holes in the top short end of the leather over the rivets. *Note:* The short edge of the leather with the hole along the center should be at the front of the papers.

6] Place 1 cap over 1 post and use your fingers to snap the rivet ends together. Place the rivet setter over the cap and strike the setter with the rawhide mallet to set the rivet. Repeat entire step.

7] Attach the Tree of Life charm to the end link of one $\frac{1}{4}$ " piece of chain. Use the 4mm jump ring to attach the free end of the previous chain to the hole in the front center of the leather.

8] Use the 14-gauge wire to form a simple loop. String the folded leather portion of the focal onto the wire, then form a simple loop.

9] Use one 5" piece of 18-gauge wire to form a hook clasp by forming a small loop on one end, then forming an open loop (or hook shape) about $\frac{1}{2}$ " in diameter; form a wrapped loop on the other end. Use one 5" piece of 18-gauge wire to form a $\frac{1}{2}$ " closed loop, string the bumpy spacer and the silver-and-crystal rondelle, then form a wrapped loop. Place both halves of the clasp on the bench block and use the chasing hammer to flatten and harden the loops.

10] Use the metal hole punch to punch 2 holes on the flat tag, opposite the existing hole; this becomes the top of the flat tag. Place the flat tag on the bench block, and holding the tree or leaf design metal stamp perpendicular to the tag, use the brass hammer to strike the stamp.

11] Attach one 8mm jump ring to the wire loop on the left side of the focal. *Use one 3" piece of 20-gauge wire to form a wrapped loop that attaches to the previous jump ring. String 1 shell round; form a wrapped loop.**

12] ***Use one 3" piece of 20-gauge wire to form a wrapped loop that attaches to the previous link; string 1 shell round and form a

wrapped loop.**** Use one 8mm jump ring to attach the previous link to the bottom of the flat tag.

13] Attach one 8mm jump ring to the top left hole in the flat tag. Repeat from * to **. Repeat from *** to **** thirteen times. Use one 8mm jump ring to attach the previous link and one $1\frac{1}{4}$ " piece of chain to the hook half of the clasp. Use one 8mm jump ring to attach the free end of the chain to the top right hole in the flat tag.

14] Use one 8mm jump ring to attach the wire loop on the right side of the focal to the eye half of the clasp. ◉



RESOURCES Check your favorite bead retailer or contact: Silver-and-crystal rondelle, rivets, cardstock, leather, Mod Podge, Tim Holtz Distress Ink stamp pad, and Ice Resin: Jo-Ann Fabric and Craft, (888) 739-4120, www.joann.com. Shell rounds: Day Beads, www.daybeads.etsy.com. Bumpy spacer: Royal Metals, www.royalmetals.etsy.com. Flat tag, Tree of Life charm, jump rings, and chain: Nunn Design (wholesale only), (800) 761-3557, www.nunn.design.com. Wire: Rio Grande, (800) 545-6566, www.riogrande.com.



dewberry brooch p. 46

[BETH SHEA]

MATERIALS

- 2 Indian sapphire 10mm brass and crystal 3-petaled florets
- 1 Indian sapphire 50mm brass and crystal floret
- 1 brass 20mm flat disc
- 1 brass 22mm 6-petal flower
- 1 brass 7mm nut and bolt set
- 1 brass $1\frac{1}{2}$ " pin back
- 2' of sage green $2\frac{1}{2}$ " bias-cut silk ribbon
- 3' of ash size D nylon beading thread
- Green patina solution

TOOLS

- Paintbrush
- Scissors
- Size 11 beading needle
- 1.8mm metal hole punch
- Mini flat-head screwdriver
- Wire cutters
- Chasing hammer
- Steel bench block

FINISHED SIZE: $4\frac{1}{4}$ " diameter

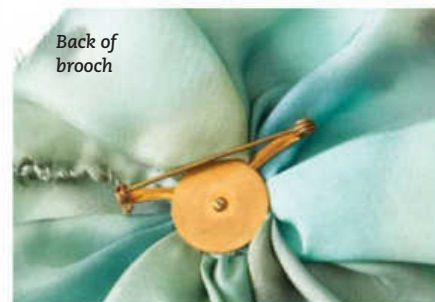
1] Make sure the brass 6-petal flower is clean and free of dirt and oils. Use the paintbrush to apply a small amount of patina solution to the flower and let dry. Apply subsequent coats until the desired effect is reached; let dry.

2] Thread the needle to the center of the beading thread, then form an overhand knot at the end. Starting at one end of the ribbon, stitch a running or gather stitch along the entire length, about $\frac{1}{8}$ " from the bottom edge.

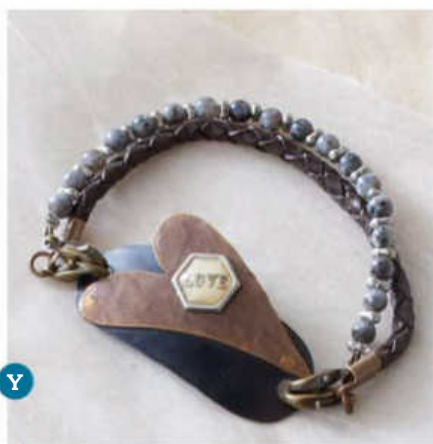
3] Gently pull the thread to gather the ribbon. Overlap both ends of the ribbon and stitch the center to hold it in place. Use a whipstitch to sew the two ends together.

4] Use the metal hole punch to punch a hole in the center of the brass flat disc. Use the bolt to layer all of the pieces in the following order so that each piece is right side up: brass flat disc, pin back, the silk flower from Steps 2 and 3, large crystal floret, patinated flower, and both small crystal florets. Thread the nut onto the bolt, then turn the flower over and use the mini screwdriver to tighten the bolt. *Note:* Take care not to tighten the bolt too much, as this may cause the crystal florets to bend.

5] Use the wire cutters to cut the bolt just above the nut. Place the back (screw side) of the bolt on the bench block and hammer the top of the bolt to lock the nut and bolt together. ◉



RESOURCES Check your favorite bead retailer or contact: Nut and bolt set: Ice Resin, (440) 963-0387, www.icesresin.com. Ribbon: Of the Earth, (888) 294-1526, www.oftheearth.org. Nymo nylon thread: FusionBeads.com, (888) 781-3559. Jax patina: Metalliferous, (212) 944-0909, www.metalliferous.com. All other materials: echo art-works, (360) 405-4341, www.echoartworks.com.



from the heart p. 47

[KRISTINA HAHN ELENIAK]

MATERIALS

- 19 silver 4x2mm peanut beads
- 18 black 4mm larvikite rounds
- 1 silver 10mm "love" hexagon
- 1 antiqued brass 41x24mm artisan heart blank
- 1 gunmetal 46x18mm 2-hole oval stamping blank
- 4 antiqued brass 7x12mm lobster clasps
- 2 antiqued brass 4.75mm jump rings
- 2 antiqued brass 2mm crimp tubes
- 2 antiqued brass 4x8mm fold-over cord ends
- 2 antiqued brass 3/8" nail-head rivets
- 4 1/2" of dark brown 3mm braided bolo leather cord
- 7" of .018 beading wire

Jewelry cement

TOOLS

- Ball-peen hammer
- Bench block
- Metal hole punch
- Fine-point marker
- Bracelet bending pliers
- Flush cutters
- Crimping pliers
- 2 pairs of chain- or flat-nose pliers

FINISHED SIZE: 7"

1] Place the heart blank on the bench block and use the ball end of the hammer to add texture. Use the metal hole punch to punch a hole in the top left curve and the bottom point of the heart.

2] Align the heart blank on top of the oval blank as desired, being careful to not cover the holes in the oval blank. Use the marker to mark a dot on the oval blank in the center of each hole in the heart. Use the hole punch to punch a hole in the oval blank over each of the marked dots.

3] Use 1 rivet to string 1 punched hole in the oval blank from back to front. Place the blank onto the bench block and string the rivet through one hole in the heart blank. Use the flush cutters to trim the rivet at an angle to about 3mm. Use the flat end of the hammer to tap the end of the rivet to flatten it, securing the heart to the oval blank. Repeat entire step. Use the bracelet bending pliers to slightly curve the two metal blanks.

4] Place jewelry cement on the back of the "love" hexagon and affix it to the top of the heart blank; let dry.

5] Use the beading wire to string 1 crimp tube and 1 lobster clasp; pass back through the crimp tube and crimp. String {1 peanut bead and 1 larvikite round} eighteen times. String 1 peanut bead, 1 crimp tube, and 1 lobster clasp; pass back through the crimp tube and crimp. Hook each previous lobster clasp to opposite holes in the oval blank.

6] Dab one end of the bolo cord with jewelry cement and insert it into 1 cord end, then use pliers to fold the cord end tightly around the ends of the cord; repeat. Let dry.

7] Use 1 jump ring to attach 1 cord end to 1 lobster clasp; repeat. Hook each previous lobster clasp to opposite holes in the oval blank. ©

RESOURCES Check your favorite bead retailer or contact: Peanut beads: Czech Beads Exclusive, www.czechbeadsexclusive.etsy.com. Larvikite: White Willow Creek, www.whitewillowcreek.etsy.com. Hexagon: Prima Marketing, (909) 627-5532, www.primamarketinginc.com. Stamping blanks, jump rings, crimp tubes, cord ends, and rivets: Vintaj, www.vintaj.com. Clasps: Shipwreck Beads, (800) 950-4232, www.shipwreckbeads.com. Bolo cord: Tandy Leather, (877) 532-8437, www.tandy-leather.com. Beading wire: Fire Mountain Gems and Beads, (800) 355-2137, www.firemountaingems.com.



daisy blue p. 47

[REJETTA SELLERS]

MATERIALS

- 1 turquoise 15x20mm ceramic faceted nugget
- 1 brass 22x73mm leaf connector
- 10 brass 8x2mm flower bead caps
- 10 brass 9x4mm cog bead caps
- 1 brass 11x23mm lobster clasp
- 10 brass 22-gauge 2" eye pins
- 2 brass 7mm jump rings
- 3 1/4" (11 links) of brass 10mm chain
- 10" of blue 1 1/8" wide floral duct tape
- 2" of brass 20-gauge wire

Blank paper

TOOLS

- Pencil
- Scissors

- Pen or fine-point marker
- 5/8" floral punch (optional)
- Metal hole punch
- Bracelet bending pliers
- Round-nose pliers
- 2 pairs of chain- or flat-nose pliers
- Wire cutters

FINISHED SIZE: 8"

1] Use the pencil and paper to draw one 5-petal flower about 5/8" across. Cut out the paper flower to make a template. Fold the 10" piece of duct tape in half lengthwise. Use the pen or marker to trace the flower template onto the duct tape; repeat nine times. Use scissors to cut out the flowers. (Alternately, use a floral punch to punch out the flowers after folding the duct tape in half.)

2] Use the metal hole punch to punch a hole in the top point of the leaf connector, 4mm from the end. Use the bracelet bending pliers and your fingers to curve the leaf connector to conform to your wrist. Use the round-nose pliers to slightly curve the veins of the leaf. Use 1 jump ring to attach the lobster clasp to the hole in the leaf connector from Step 2. Attach 1 jump ring to the free end of the leaf connector. Use the wire to form a wrapped loop that attaches to the previous jump ring. String the ceramic nugget; form a wrapped loop that attaches to one end of the chain.

3] Use the metal hole punch to punch a hole in 1 flower; repeat using the remaining flowers. Use 1 eye pin to string 1 flower bead cap, 1 duct-tape flower, and 1 cog bead cap; form a wrapped loop that attaches to the first chain link (closest to the ceramic nugget). Repeat entire step to attach 1 duct tape flower to each consecutive chain link, leaving the last chain link blank. ©



RESOURCES Check your favorite bead retailer or contact: Ceramic nugget: Bo Hulley Beads, www.bohulleybeads.etsy.com. Vintaj leaf connector, flower bead caps, eye pins, jump rings, and chain: Lima Beads, www.limabeads.com. Cog bead caps: Brassologie, (815) 281-3211, www.brassologie.com. Clasp: AD Adornments, (773) 338-3818, www.adornments.com. Patterned duct tape: Hobby Lobby, (800) 888-0321, www.hobbylobby.com. Wire: Artwear Elements, www.artwearelements.etsy.com. Floral punch: Jo-Ann Fabric and Craft, (888) 739-4120, www.joann.com.



gadgets & gears p. 48

[KAYE KRAUS]

MATERIALS

- 12-15 assorted silver and brass 8-15mm key/heart/scissor/star charms
- 12-15 assorted copper/brass/silver 3-9mm gears (small)
- 5 assorted copper/brass/silver 25mm gears (large)
- 5 brass 16mm rope rings
- 1 brass 7×9mm lobster clasp
- 20-24 assorted silver and brass 5-7mm jump rings
- 1 brass 10mm textured jump ring
- 1 pewter 7" bezel bracelet with five 22mm circular bezels
- 5 clear 12mm resin circles
- Scrapbook paper
- 1¼" of brass 10mm/15mm figure-eight chain
- Industrial adhesive

TOOLS

- Pencil
- Scissors
- Toothpick
- 2 pairs of chain- or flat-nose pliers

FINISHED SIZE: 8" (adjustable to 9")

1] Lay 1 large gear on top of the scrapbook paper and trace the opening of the gear onto the paper; repeat four times. Cut out all circles.

2] Use the adhesive to glue 1 paper circle to the inside of 1 bezel on the bracelet. Glue 1 large gear onto the top of the bezel, then glue 1 resin circle on top of the paper circle. Glue 1 rope ring around the edge of the resin circle. Use the toothpick to add a small amount of adhesive to 1 small gear and attach it to the top of the resin circle; repeat.

3] Repeat Step 2 four times.

4] Use the assorted jump rings to attach 3-4 charms to each chain link between the bezels on the bracelet. Attach 1 small jump ring to one end of the bracelet. Use the 10mm textured jump ring to attach the smallest link of the figure-eight chain to the previous jump ring. Use 1 small jump ring to attach 2 charms to the free end of the figure-eight chain.

5] Attach 1 small jump ring to the lobster clasp. Attach 1 small jump ring to 1 charm. Use 1 small jump ring to attach both of the previous jump rings to the free end of the bracelet. ☺

RESOURCES Check your favorite bead retailer or contact: Chain, resin circles, and E6000 adhesive: Michaels, (800) 642-4235, www.michaels.com. All other materials: Hobby Lobby, (800) 888-0321, www.hobbylobby.com.



happy go lucky p. 49

[ERIN STROTHER]

MATERIALS

- 2 light blue 4mm recycled-glass rounds (A)
- 7 carnelian 3mm faceted rounds (B)
- 2 apatite 6mm chips (C)
- 10 apple coral 10×4mm limestone saucers (D)
- 1 amazonite 10×9mm teardrop (E)
- 4 turquoise 12×7mm magnesite faceted rondelles (F)
- 3 amazonite 12×17mm rectangles (G)
- 1 amazonite 15×30mm twisted oval (H)
- 2 brass 14×20mm diamond stamping blanks
- 3 brass 19mm discs
- 1 brass 25mm disc
- 1 antiqued brass 10×20mm hook-and-eye clasp
- 1 brass 4mm jump ring (small)
- 18 brass 6mm jump rings (medium)
- 1 brass 8mm jump ring (large)
- 35" of brass 22-gauge wire
- Scrapbook paper with coral and turquoise patterns
- Decoupage medium
- Diamond Glaze resin
- Waxed paper

TOOLS

- Metal hole punch
- Pencil
- Scissors
- Small paper hole punch
- Paintbrush
- 2 pairs of chain- or flat-nose pliers
- Round-nose pliers
- Wire cutters

FINISHED SIZE: 18" (with 1¼" focal)

1] Use the metal hole punch to punch a hole at the top and bottom of each brass disc and diamond stamping blank.

2] Trace the shapes of the brass discs and diamond blanks onto the scrapbook paper, then use scissors to cut out the shapes. For the focal (25mm disc), cut additional diamond and teardrop shapes from the scrapbook paper. Use a paper hole punch to punch 1 small circle of scrapbook paper for the focal and 1 small circle of scrapbook paper for 1 diamond blank.

3] Place the paper shapes on a piece of waxed paper and use the paintbrush to coat one side of each shape with decoupage medium to seal the paper, then let dry; repeat on the other sides. Rinse the brush thoroughly and let dry.

4] Clean each brass disc and diamond blank with warm soapy water, dry thoroughly, then use the paintbrush to add a light coat of resin and adhere the matching paper shape to each disc and diamond blank. Trim any overhanging paper so it is flush with the disc or diamond blank. Use decoupage medium to adhere the additional paper shapes from Step 2 to the focal and 1 diamond blank according to the photo; let dry.

5] Place a few drops of resin in the center of each disc, on top of the paper, and use the paint brush to smooth it over the entire surface, eliminating any air bubbles. Allow to dry overnight. Repeat entire step twice, giving each disc three coats of resin. Use the metal hole punch to carefully punch through the existing holes in each disc and diamond blank.

6] Use one 3" piece of wire to form a wrapped loop. String 1A and 2D; form a wrapped loop.

7] Repeat Step 6 using 1D, 1F, and 1C. Repeat Step 6 using 1D, 1F, and 1D. Repeat Step 6 using 1A, 1D, and 1F. Repeat Step 6 using 1C and 2D. Repeat Step 6 using 2D and 1F.

8] Use one 3" piece of wire to form a wrapped loop. String 1B, 1G, and 1B; form a wrapped loop. Repeat entire step twice.

9] Use one 5" piece of wire to form a wrapped loop. String the H; form a wrapped loop.

10] Use one 3" piece of wire to form a wrapped-loop bail on the E, adding 1B after forming the loop but before completing the wire wrap so as to trap the B between 2 wire-wrapped sections. Use the small jump ring to attach the bail just formed to the bottom of the focal. Use 1 medium jump ring to attach the large jump ring to the top of the focal.

11] Form two beaded strands by using medium jump rings to connect the beaded links and resin components according to the photo. Use medium jump rings to attach one end of each strand to the large jump ring on the focal.

12] Use 1 medium jump ring to attach one half of the clasp to the free end of 1 strand; repeat. ☺

RESOURCES Check your favorite bead retailer or contact: Recycled-glass rounds: Lima Beads, www.limabeads.com. Carnelian, apatite, magnesite, and Diamond Glaze resin: Fire Mountain Gems and Beads, (800) 355-2137, www.firemountaingems.com. Limestone saucers: Beads and Pieces, (800) 652-3237, www.beadsandpieces.com. Amazonite: Beadaholique, (866) 834-4618, www.beadaholique.com. Diamond blanks, brass discs, and wire: Rings

& Things, (800) 366-2156, www.rings-things.com. Clasp: Brassologie, (818) 809-5645, www.brassologie.com. Jump rings: Blue Buddha Boutique, (866) 602-7464, www.bluebuddhaboutique.com. Scrapbook paper and Mod Podge decoupage medium: Michaels, (800) 642-4235, www.michaels.com.



jazz june p. 50

[ANNE POTTER]

MATERIALS

2 periwinkle 8x10mm cathedral beads
3 cobalt 9x9-13mm powder-glass irregular rounds
5 denim blue 8mm sponge coral rounds
4 brass 8x9mm bicones
1 antiqued brass 30x50mm hinged picture frame pendant
1 antiqued brass 6x10mm lobster clasp
1 antiqued brass 4mm jump ring
15 antiqued brass 5mm jump rings
1 antiqued brass 5x7mm oval jump ring
1 antiqued brass 10mm jump ring
1 denim blue 55mm tassel
8" of antiqued brass 5x6mm double curb chain
18" of antiqued brass 26-gauge wire
4' of antiqued brass 20-gauge wire
Mica flakes
White paper

TOOLS

Typewriter or computer
Scissors
Round-nose pliers
2 pairs of chain- or flat-nose pliers
Wire cutters

FINISHED SIZE: 22"

1] Type the words "Jazz June. We Die Soon." so that it fits within a 1½ x 1" rectangular space on the page. Cut the paper to fit inside the picture frame pendant. Insert the paper and 2 or 3 mica flakes inside the pendant and then latch it closed. Use the 26-gauge wire to wrap around the center of the pendant.

2] Use one 6" piece of 20-gauge wire to form a wrapped-loop bail on the tassel. Use one 5mm jump ring to attach the wrapped loop to the loop on the pendant.

3] Use one 3" piece of 20-gauge wire to form a wrapped loop. String 1 brass bicone and form a wrapped loop.

4] Repeat Step 3 three times for a total of 4 brass bicone links. Repeat Step 3 twice using the cathedral beads. Repeat Step 3 three times using the powder-glass rounds. Repeat Step 3 five times using the sponge coral rounds.

5] Use the 10mm jump ring to attach 1 brass bicone link to the loop on the pendant. *Use one 5mm jump ring to attach the free end of the previous link to 1 cathedral bead link.** Repeat from * to **, attaching links in the following order: 1 powder-glass link, 1 sponge coral link, 1 powder-glass link, 1 brass bicone link, and 1 sponge coral link. Use one 5mm jump ring to attach the last sponge coral link to one 4" piece of chain.

6] Use the 4mm jump ring to attach the lobster clasp to the free end of the previous chain.

7] Repeat Step 5, substituting 1 sponge coral link for the second powder-glass link. Attach the oval jump ring to the free end of the chain. ☺

RESOURCES Check your favorite bead retailer or contact: Cathedral beads: Charleston Bead Co., (843) 573-4940, www.charlestonbeadcompany.com. Powder-glass rounds and brass bicones: Ethnic Bead Shop, www.ethnicbeadshop.etsy.com. Sponge coral rounds: Hobby Perline, www.hobbyperline.com. Pendant: HHH Designs, www.hhhdesigns.etsy.com. Clasp and oval jump ring: Yadana Beads, www.yadana beads.etsy.com. 4mm and 5mm jump rings: The Beady Eye, (905) 987-4775, www.thebeadyeye.com. 10mm jump ring and wire: Hobby Lobby, (800) 888-0321, www.hobbylobby.com. Tassel: Woman Shops World, www.womanshopsworld.etsy.com. Chain: Hannah's Supplies, www.hannahsupplies.etsy.com. Mica flakes: Mica Clay, (800) 781-2529, www.micaclay.com.



vintage victorian cuff p. 51

[CAROL SPINSKI]

MATERIALS

2 rhinestone 10mm charms or buttons
2 brass 15mm 6-petal flowers
1 brass 16mm flat tag charm
1 brass 13x42mm key charm
1 brass 18mm button, charm, or cabochon with beads or pearls
1 white 13mm button

2 white 25mm 4-hole ornamental buttons
1 white-and-brown 32mm ornamental button
1 brass 20mm spring-ring clasp
1 brass 6mm jump ring
2 brass 8mm jump rings
2 brass 20mm rings
1 brown soft suede belt
6" of gold thread
Jewelry cement

TOOLS

Scissors
Decorative rubber stamp
Dark brown archival ink stamp pad
Needle
2 pairs of chain- or flat-nose pliers

FINISHED SIZE: 8"

Tip: This designer used parts from old pieces of jewelry. You can find vintage-looking buttons, charms, and cabochons at craft or thrift stores.

1] Measure your wrist and cut the belt accordingly, adding 1" extra to each end of the leather to allow for the closures. The cuff shown uses a leather strip that is 1" wide by 8½" long. If desired, use scissors to round the corners.

2] Use the rubber stamp and ink pad to stamp a design on the right side of the leather. Let dry.

3] Fold one end of the leather through one 20mm ring, leaving a 1" tail. Place a generous amount of jewelry cement where the leather is folded under and press down tightly to secure. Let dry. Repeat entire step on the other end of the leather.

4] Use the needle and thread to stitch an "X" in the center of one 25mm button, knotting in the back to secure; repeat. Note: This is for decorative effect only.

5] Use jewelry cement to adhere the 32mm button to the center of the leather, then use jewelry cement to attach the 18mm cabochon, one 6-petal flower, and 1 rhinestone charm in a stack.

6] Use jewelry cement to adhere one 25mm button to the leather on each side of the center button. Use jewelry cement to attach the 13mm button to the brass tag charm, then to attach 1 brass flower and 1 rhinestone charm to the button.

7] Use one 8mm jump ring to attach the loop of the spring-ring clasp to one 20mm brass ring. Use one 8mm jump ring to attach the brass tag charm to the ring part of the spring-ring clasp. Use the 6mm jump ring to attach the key charm to the previous 8mm jump ring. ☺

RESOURCES Check your favorite bead retailer or contact: Suede belt: Check your local thrift store. All other materials: Hobby Lobby, (800) 888-0321, www.hobbylobby.com.

artisans village

ARTWEAR ELEMENTS™

Bloom Where You Are Planted -
Unique Artwear Findings!™
Handmade, Hand Painted Ceramic
Beads, Findings, Oxidized Wire,
Sari Silk
Artwearelements.etsy.com
Cheldena.etsy.com



Linden Avenue Designs

Artisan beads and
findings, Greek beads,
leather, tools



www.lindenavenuedesigns.etsy.com

The Bead Bungalow

Great Variety of Beads and Findings
~ Superior Customer Service
www.etsy.com/shop/TheBeadBungalow

JWELED STEEL BY BROUSSARD

Flame-painted steel art and
jewelry. Handmade in the USA.
www.JeweledSteel.com
Michelle@JeweledSteel.com



BEAD ME A STORY

Rubber O-rings, Chain
Maille & Bead Supplies
www.beadmeastory.com



fresh baked beads

unique color swirled
lampworks
READY TO SHIP
www.freshbakedbeads.etsy.com
freshbakedbeads@centurytel.net



C-Koop Beads

Enamelled:
beads
buttons
pendants
components
www.CKoopbeads.com
Like us on Facebook!

THE CLASSIC BEAD

by tracee
artisan crafted
ceramic - leather - linen
classicbead.etsy.com
classicelements.etsy.com



DELPHINE'S FLOWER BEAD SHOP

Lucite Flower Beads,
Jewelry Bead Kits, Resin
Cabs, Craft Supplies
www.delphinesflowerbeadshop.com



ECHO ARTWORKS

vintage, natural &
unusual beads & mixed
media supplies
www.echoartworks.com



gaea

handmade ceramic beads

www.gaea.cc

BEAD HAPPILY EVER AFTER

-Vintage Treasures-
beads, findings, glass, lucite,
rhinestones, and more!
www.BeadHappilyEverAfter.etsy.com



SILVER SPARROW BEADS

Importers of quality metal
focal pendants and beads.
Czech glass chain and other
unusual jewelry components.
www.silversparrowbeads.net



TJ's Wire Warehouse & Findings

Premium Products with First Class Service

Use Coupon Code **String16** for a 10%
discount on orders over \$35!

www.tjwirewarehouse.etsy.com

Tuula Gems

Gemstones, Beads, and Jewelry Supplies



www.tuulagems.etsy.com

gemstones
beads
connectors
pearls

WYNWOODS GALLERY & STUDIO

hand cast sterling, bronze &
pewter charms, rosary parts
& religious medals.
www.wynwoods.com



ARTWORKS BY CATHY J.

Hand finished brass
stampings
filigreeandme.com
cjones134@cox.net




Allene's Beads

Presenting fine American and
European Glass
Bead Artists.
www.allenesbeads.com



Your Resource for Online Stores and Communities
plus Out-of-the-Ordinary Beads and Findings

ARTIST BEADS



*"If you would attain to what you are not yet . . . Keep adding, keep walking, keep advancing."
- St Augustine of Hippo*

ANNE CHOI
HANDMADE SILVER BEADS
www.annechoi.com

BEADS



ARTE BELLA SURPLUS
ARTE BELLA BEADS
Czech Glass • Seed Beads • Metals
ArteBellaSurplus.etsy.com
ArteBellaBeads.com

CHAINS & FINDINGS



AD ADORNMENTS
www.adadornments.com
the best source for all your design needs

WEBSITES TO VISIT

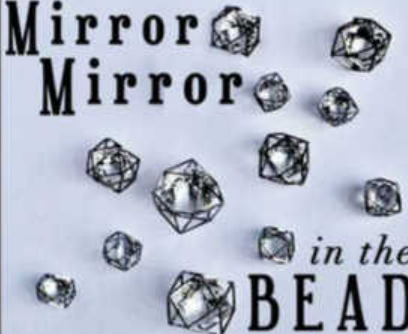
Fancifuls Inc.
Brass Charms And Embellishments
Made in the USA
Lead and Nickel Free



No Minimums
www.fancifulsinc.com

WEBSITES TO VISIT

Mirror Mirror



in the
BEAD
New Cage Crystal Beads from
Jesse James Beads.com

WEBSITES TO VISIT

*Bead what you love,
love what you bead!*

Join our free community for
beaders just like you!

Get started with a
free eBook download
and sign up for free!

 **Beading Daily**
www.BeadDaily.com/Free-eBooks

SPRING HAS SPRUNG!

Invigorate your spring wardrobe with fresh new accessories that are blooming with color!
Visit any of the links shown here for instant how-to downloads for \$4 or less. And visit interweavestore.com or create.craftdaily.com for access to hundreds of jewelry and other craft patterns.



Monet's Flowers Earrings
www.bit.ly/monet-flowers



Summer Wine Necklace
www.bit.ly/summer-wine-necklace

WWW.INTERWEAVESTORE.COM

SHOP THESE FINE RETAILERS!

ARIZONA

The Bead Garden of Sedona —Sedona

www.sedonabeadgarden.com

Tools and supplies for the bead artist! Northern Arizona's largest selection of beads, tools, and supplies. We offer classes, workshops, and an open beading table. Mon-Sat 10-5, Sun 12-5.
3150 W. Hwy. 89A (928) 282-7334

CALIFORNIA

Bead Inspirations—Alameda

www.beadinspirations.com

Best selection & prices of Vintaj brass. Gorgeous, quality beads, findings, and unique kits. Focal gems & gem strands. Metal stamping. Picture frame pendants by Nunn Designs & Tierracast. Czech glass, Swarovski crystals, and pearls. Ranger Inks. Metalsmithing. Inspiring Classes. Friendly, knowledgeable staff. Shop online too.
1544 Park St. (510) 337-1203

Beadtopia—El Segundo (S. of LAX) www.bead-topia.com

We are a full-service bead store with knowledgeable staff and friendly service. Find all the newest beading and jewelry trends, plus a large selection of glass, semiprecious, pearls, Delicas, seed beads, and findings. See our website for our ever-changing, exciting classes and party details. Mon, Tue, Fri 11-5, Wed, Thu 11-7, Sat 10-4. Closed Sun.
319 Richmond St. (310) 322-0077

Ruby Tuesday Bead Company —Long Beach

www.beadstrands.com

Full-service bead store with an amazing selection of glass and semiprecious beads. Come see our wall of beads. Great prices. Quality beads. Friendly, helpful staff.
1766 Clark Ave. (562) 498-2700

The Black Bead—San Diego www.theblackbead.com

A great San Diego bead store by the beach. We have a unique and complete collection of everything for the bead enthusiast, at any level. All varieties of beads, chain, wire, findings, books, tools, and more. Wed-Sat 10:30-7, Sun 11-6.
5003 Newport Ave. (619) 222-2115

Beadahs—Santa Monica www.beadahs.com

Bead inspired in a 2,000 sq. ft. world of rare beads, unique findings and exotic treasures. Just steps from the famous 3rd Street Promenade. Open 7 days a week; call for hours.
203 Arizona Ave. (310) 395-0033

COLORADO

Bead Song—Salida

10-5 Mon-Sat. Czech glass, gemstones, Bali, seed beads, Delicas, bugles, charms, sterling and gold-filled findings and beads, books, tools, supplies, and much more. Email: tami@beadsong.com
107 F St. (719) 530-0110

FLORIDA

Bead & Art

—Lighthouse Point (Pompano)

www.beadandart.com

South Florida's friendliest bead store. Tons of semiprecious, pearls, Czech, Swarovski, sterling, tools, and supplies. Original lampwork beads. Classes and kits. Check out our website for store location and class schedules.
5034 N. Federal Hwy. (954) 418-3390

BEADS!—Tampa

www.eBeads.com

THE LARGEST SEED BEAD COLLECTION IN THE TAMPA BAY AREA! We stock 1,097 Delica colors, Tilas, Half Tilas, Cubes, Magatamas, Rounds, Berry Beads, and more! Czech glass, SuperDuos, Fire Polish, Tiles, and more! Gemstones, Freshwater Pearls, base metal findings, Swarovski Crystals, and lampwork beads. Classes by local and nationally known artists. Visit our website for hours and class schedule.
beads@ebeads.com

12807 W. Hillsborough Ave. Ste. H (813) 258-3900

GEORGIA

Gone With The Bead

—Watkinsville (Athens)

www.gonewiththebead.com

Come and see our unique and exciting shop. We have 2,400 sq. ft. featuring artisan beads and focals, Czech beads and buttons, Kumihimo, vintage beads and stampings, Miyuki, Swarovski, Venetian beads, TierraCast, Wire Lace and Wire Knitz, Hill Tribe Silver, Kazuri, African metal and trade beads, pearls, stone, wood, and horn. See our gallery tour at www.gonewiththebead.com. Please check website for hours.

16 N. Main St., Ste. D (Entrance at the back) (706) 769-2012

ILLINOIS

Southpass Beads—Cobden

Website: www.southpassbeads.etsy.com

For All Your Beading Needs! Great selection & prices! Best little bead shop in southern Illinois! Unique ceramic beads, Czech glass, findings, Soft Flex wire, all kinds of cord, seed beads, gemstones & more. Watch for our trunk shows. Classes & Parties Available. Follow us on Facebook & Twitter! Thurs-Fri 12-6, Sat 10-5, Sun 12-5, or by appointment.

203 E. Ash St. (618) 893-6170

Rustic River Finds—Galena

www.rusticriverfinds.com

Rustic River is a collection of handcrafted jewelry, Vintaj Natural Brass, specialty beads, & Unique finds. Our shop is inspired by nature. Open 7 days a week.

109 N. Main St. (815) 776-0043

Bead In Hand—Oak Park

www.beadinhand.com

An extraordinary selection of beads and beading supplies. Birthday parties, classes, repairs. Space for customers to "stay and play." Closed Wed.

145 Harrison St. (708) 848-1761

INDIANA

Imagine Beads—Valparaiso

www.labeadalocabeads.com

Largest seed bead and Swarovski dealer in the area. Classes available. Large selections of books, findings, and stones, from the rare to the unique. Hours: Mon, Tues, Thurs 10-5; Wed, Fri 10-6; Sat 10-4; Sun Closed.

103 E. Morthland Dr., Ste. 1 (219) 299-2270

LOUISIANA

Baton Rouge Bead Company

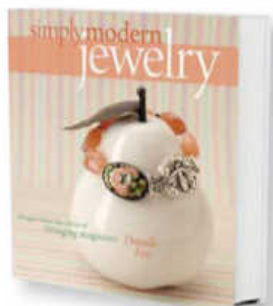
—Baton Rouge

www.br-beads.com

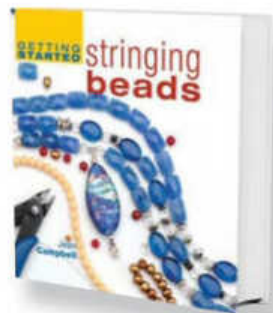
We're a large full-service bead store specializing in natural stone, freshwater pearls, glass beads, seed beads and multitudes of charms and pendants in various metals. Classes offered on many techniques, parties for ages 8+ and shopping assistance from experienced and knowledgeable bead makers. M-F 10 AM to 5 PM, Saturday 10 AM to 4 PM, closed Sunday. Near the intersection of Sherwood Forest Blvd. and Coursey Blvd.

11943 Coursey Blvd., Ste. A (225) 292-3633

Our Editors Recommend These Great Resources!



Simply Modern Jewelry
by Danielle Fox



Getting Started Stringing Beads
by Jean Campbell



Stringing Style
by Jamie Hogsett




Stringing Style 2
by Jean Campbell

PLUS!
For FREE how-to videos, visit BeadingDaily.com!
Just click on the "Videos" tab, then select "Free Beading Videos."

Advertiser's Index

AD Adornments..... 72	Chelde Enterprises, LLC/ Artwear Elements..... 71	NCBeads.com 12
Allene's Beads 71	C-Koop Beads 71	Nina Designs 12
Anne Choi..... 72	Classic Bead, The 71	Nunn Design 22
Antelope Beads..... 6	Delphine's Flower Bead Shop 71	Pepperell Braiding Co. 6
Artbeads.com C2	Echo Artworks 71	PJ Tool Jewelry..... 13
Arte Bella..... 72	Fancifuls Inc. 72	PJ Tool Jewelry..... 23
Artworks by Cathy J/ Filigree & Me 71	Fire Mountain Gems..... C4	Ranger Industries Inc. 13
Bead Bungalow, The 71	Fresh Baked Beads..... 71	Shipwreck Beads, Inc. 53
Bead Happily Ever After..... 71	Fusion Beads 5	Silver Sparrow Beads..... 71
Bead Me A Story 71	Gaea 71	Soft Flex Co..... 23
Beadaholique 12	Happy Mango Beads..... 53	TierraCast 12
Beadalon/Wire & Cable Specialties..... 53	Helby Import/Beadsmith 22	TJ's Wire Warehouse & Findings 71
Best Bead Show 5	Interweave..... 5, 6, 22, 72, C3	Tuula Gems..... 71
C. G. M. Inc. 10, 11	Jesse James Beads..... 72	Vintaj Natural Brass Co..... 5
	Jeweled Steel by Broussard 71	Wynwoods Gallery & Studio..... 71
	LimaBeads.com 1	Xuron 6
	Linden Avenue Designs..... 71	

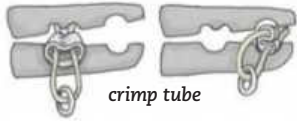
Basic Techniques

 Techniques with this symbol indicate an accompanying video on beadingdaily.com. Click on the "Videos" tab, then select "Free Beading Videos."

Pass Through vs Pass Back Through


Pass through means to move your needle (or beading wire) in the same direction that the beads have been strung. Pass back through means to move your needle (or beading wire) in the opposite direction.

Crimping



crimp tube

CRIMP TUBES are seamless metal tubes used to secure the end of a beading wire. To use, string a crimp tube and the connection finding (i.e., the loop of the clasp). Pass back through the tube, leaving a short tail. Place the crimp tube in the front notch of the crimping pliers and squeeze to shape the tube into an oval. Use the back notch of the crimping pliers to press the length of the tube down between the wires, enclosing them in separate chambers of the crescent shape. Rotate the tube 90° and use the front notch of the pliers to fold the two chambers onto themselves, forming a clean cylinder. Trim the excess wire. **CRIMP BEADS** are serrated metal beads. Twisted crimp tubes and crimp beads can be secured by squeezing them flat with chain- or flat-nose pliers.

 **CRIMP COVERS** hide crimp tubes and give a professional finish. To attach, gently hold a crimp cover in the front notch of the crimping pliers. Insert the crimped tube and gently squeeze the pliers, encasing the tube inside the cover.



placing a crimp cover

CRIMP/CORD ENDS

consist of a loop attached to a tube. Dab the leather, plastic, ribbon, or other cord with jewelry glue, then place it in the crimp/cord end. If you're using a crimp end, crimp it as you would a crimp tube.





crimp/cord end

Knotting



overhand knot

 The **OVERHAND KNOT** is the basic knot for tying off thread: Make a loop with the stringing material. Pass the cord that lies behind the loop over the front cord then through the loop and pull snug.

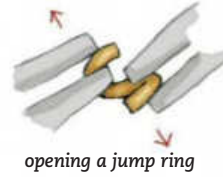
 **LARK'S HEAD KNOTS** are great for securing stringing material to another piece, such as a ring or a donut: Fold the stringing material in half. Pass the fold through a ring or donut, then pull the ends through the loop created and pull snug.




lark's head knot

Wireworking

METAL WIRE comes in many finishes and gauges. The lower the gauge number, the thicker the wire. The hardness or softness of wire is called "temper." Most wire comes in dead-soft, half-hard, and hard tempers. *Unless otherwise noted, wire used in this issue is half-hard—the best temper for making strong loops and other shapes.*



opening a jump ring

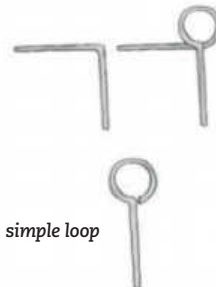
 **JUMP RINGS** connect holes and loops. Open a jump ring by grasping each side of its opening with a pair of pliers; don't pull apart. Instead, twist in opposite directions so that you can open and close without distorting the shape.




head pins

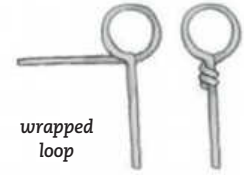
eye pins

HEAD PINS are straight wires with a flat disc, ball, or other shape at one end. **EYE PINS** are straight wires that end in a loop.





simple loop

 To form a **SIMPLE LOOP**, use flat-nose pliers to make a 90° bend at least 1/2" from the end of the wire. Use round-nose pliers to grasp the wire after the bend; roll the pliers toward the bend, but not past it, to preserve the 90° bend. Use your thumb to continue the wrap around the nose of the pliers. Trim the wire next to the bend. Open a simple loop just as you would a jump ring.




wrapped loop

 To form a **WRAPPED LOOP**, begin with a 90° bend at least 2" from the end of the wire. Use round-nose pliers to form a simple loop with a tail overlapping the bend. Wrap the tail tightly down the neck of the wire to create a couple of coils. Trim the excess wire to finish.

 Make a **DOUBLE-WRAPPED LOOP** by wrapping the wire back up over the coils, toward the loop, and trimming the wire tail at the loop.




wrapped-loop dangle

 **DANGLES** can be strung as they are, attached using jump rings, or linked to other loops. Use a head pin or eye pin to string the bead(s), then form a simple or wrapped loop.



wrapped-loop bail

 **WRAPPED-LOOP BAILS** turn side-drilled beads, usually teardrops, into pendants. Center the bead on a 2" or longer piece of wire. Bend both ends of the wire up the sides and across the top of the bead. Bend one end straight up at the center of the bead, then wrap the other wire around it to form a couple of coils. Form a wrapped loop with the straight-up wire, wrapping it back down over the already-formed coils. Trim the excess wire.

BRACELETS!

19 Designs! (Page 42)

Unless otherwise noted, the materials used in the bracelets are from the designer's own collection.



1. Designed by Michelle McEnroe. Sage green pressed-glass round, champagne and sage faceted rondelles, and champagne bellflowers: Bobbi's This N That, www.bobbithisthat.etsy.com. Persimmon faceted rondelles, faceted oval, peridot faceted round, and cream Picasso bellflowers: Arte Bella Surplus, www.artebellasurplus.etsy.com. Champagne baroque pearl: The Bead Apothecary, www.thebeadapothecary.etsy.com. Carved tubes: The Vintage Bead Cache, www.vintagebeadcache.etsy.com. Similar peach discs: Yummy Treasures, www.yummytreasures.etsy.com. Marbled fluted round and peach fluted oval: Reduction Nation, www.reductionnation.etsy.com. Similar gray flat oval: MK Beads, www.mksupplies.etsy.com. Ceramic rounds and bracelet bar: Starry Road Studio, www.ktotten.etsy.com. Clasp, chain, and cord: Lima Beads, www.limabeads.com.
2. Designed by Lisa Marie Baldock. Pressed-glass flowers, faceted rounds, leather, brass links, and clasp: The Curious Bead Shop, www.thecuriousbeadshop.etsy.com. All other materials: FusionBeads.com, (888) 781-3559.
3. Designed by Andria McKee. Tiger eye rounds: Michaels, (800) 642-4235, www.michaels.com. Ceramic pendant: The Classic Bead, www.classicbead.etsy.com. All other materials: Shipwreck Beads, (800) 950-4232, www.shipwreckbeads.com.
4. Designed by Christie Schneider. Coral cube: Bead Paradise II, (440) 775-2233, www.beadparadise.com. Tibetan agate barrel and wood rounds: Happy Mango Beads, (970) 532-2546, www.happymangobeads.com. Tibetan agate oval: Brightlings Beads, (919) 388-9822, www.brightlingsbeads.com. Tibetan silver-capped resin barrel: Kate's Treasure, (914) 526-4532, www.katestreasure.com. Carved wood ovals: GoodyBeads.com, (952) 938-2324. Lotus charm: Auntie's Beads, www.auntiesbeads.com. Silk cord: Gemshow-Online, www.gemshow-online.com. Leather: B Toucan, (509) 884-2307, www.btoucan.com.
5. Designed by Stephanie LaRosa. All materials: Michaels, (800) 642-4235, www.michaels.com.
6. Designed by Sabri Mizener. All materials: Unkamen Supplies, www.unkamensupplies.com.
7. Designed by Andria McKee. Blue rounds: Michaels, (800) 642-4235, www.michaels.com. Bracelet bar: Orrtec, www.orrtec.etsy.com. All other materials: Shipwreck Beads, (800) 950-4232, www.shipwreckbeads.com.
8. Designed by Lavon Peters. Seed beads: Beyond Beadery, (800) 840-5548, www.beyondbeadery.com. Druk beads: The BeadSmith, (732) 969-5300, www.helby.com. Swarovski crystal pearls: Artbeads.com, (866) 715-2323.

Wood rounds: Beads & Honey, www.beadsandhoney.com. Ceramic lentils: Golem Design Studio, www.golemstudio.com. Clasp: Fire Mountain Gems and Beads, (800) 355-2137, www.firemountaingems.com.

9. Designed by Gaea Cannaday. Ceramic beads: Gaea Handmade, gaea.indiemade.com. Copper rings and clasp: Gaea, (805) 640-8989, www.gaea.cc.
10. Designed by Sabri Mizener. All materials: Unkamen Supplies, www.unkamensupplies.com.
11. Designed by Martha Thomas. Lampwork rondelles: Ellen Dooley Lampwork, www.edooley.etsy.com. Pressed-glass flowers: Arte Bella Surplus, www.artebellasurplus.etsy.com. Dragonfly connector: HumbleBeads, www.humblebeads.etsy.com. Rubber rings: www.myelements.etsy.com. Wavy discs: Missficklemedia, www.missficklemedia.etsy.com. All other materials: Lima Beads, www.limabeads.com.
12. Designed by Tara Leitermann. Cathedral beads, bronzite rounds, and circular bone link: Shipwreck Beads, (800) 950-4232, www.shipwreckbeads.com. Key: Patina Queen, www.patinaqueen.com. Cross link: C-Koop Beads, (218) 525-7333, www.ckoopbeads.com. Filigree bead cap: VintageJewelrySupplies.com, (423) 328-7387. Ribbed bead caps: Fire Mountain Gems and Beads, (800) 355-2137, www.firemountaingems.com. Clasp: Vintaj, www.vintaj.com. Cord and leather: Hobby Lobby, (800) 888-0321, www.hobbylobby.com.
13. Designed by Stephanie LaRosa. All materials: Michaels, (800) 642-4235, www.michaels.com.
14. Designed by Andria McKee. Ceramic toggle ring: Firefly Design Studio, www.fireflydesignstudio.etsy.com. Ball-end head pins: Yadana Beads, www.yadanabeads.com. Chain: Linden Avenue Designs, www.lindenavedesigns.etsy.com. All other materials: Michaels, (800) 642-4235, www.michaels.com.
15. Designed by Martha Thomas. Seed beads: FusionBeads.com, (888) 781-3559. Ceramic beads: Gaea, www.gaea.cc. All other materials: Lima Beads, www.limabeads.com.
16. Designed by Marcy Kentz. All materials: Nina Designs, (800) 336-6462, www.ninadesigns.com.
17. Designed by Denise McCabe. Fire-polished rounds: Beaded Bliss Designs, (513) 202-1706, www.followyourbeadedbliss.com. Twisted links: Hobby Lobby, (800) 888-0321, www.hobbylobby.com. Resin focal and clasp: Fire Mountain Gems and Beads, (800) 355-2137, www.firemountaingems.com.
18. Designed by Kathryn Toplis Lohaus. Faceted rondelles: Jo-Ann Fabric and Craft, (888) 739-4120, www.joann.com. Mini-crow roller beads: Baker Bay Bead Co., (541) 942-3941, www.bakerbay.com. Bellflowers: Wandering Star Beads and Gifts, www.mbonan9.etsy.com. Pink rounds: Michaels, (800) 642-4235, www.michaels.com. Puffed ovals: Potomac Bead Co., (301) 393-4667, www.potomacbeads.com. Heart charm: Fire Mountain Gems and Beads, (800) 355-2137, www.firemountaingems.com. Bunny: Tree Wings Studio, www.treewingsstudio.etsy.com. Clasp and peanut-shaped links: Vintaj, www.vintaj.com. Brass rounds: Hobby Lobby, (800) 888-0321, www.hobbylobby.com.
19. Designed by Christie Schneider. Seed beads: Fusion Beads.com, (888) 781-3559. Aqua recycled-glass rondelle, white donut, and freckled rondelle: Happy Mango Beads, (970) 532-2546, www.happymangobeads.com. Black round: Bead to Feed, (520) 869-9381, www.beadtofeed.com. Red wood round: Artbeads.com, (866) 715-2323. Polka-dot round: Golem Design Studio, www.golemstudio.com. Kazuri ceramic barrel and rounds: Antelope Beads, (720) 287-2026, www.antelopebeads.com. Coral round and pewter pendant: GoodyBeads.com, (952) 938-2324. Brass chips: Fire Mountain Gems and Beads, (800) 355-2137, www.firemountaingems.com. Wavy discs:

Enchanting Beads, www.enchantingbeads.etsy.com. Female symbol charm: Chubby Chico Charms, (800) 704-6991, www.chubbychicocharms.com. Bali-style spacers: Treasure Island Pearls, www.treasureislandpearls.com. Bead cap: Dava Bead & Trade, (503) 288-3991, www.davabead.com.

EARRINGS!

24 Designs! (Page 54)

Unless otherwise noted, the materials used in the earrings are from the designer's own collection.



1. Designed by Leah Helmrich. All materials: Unkamen Supplies, www.unkamensupplies.com.
2. Designed by Gaea Cannaday. Faceted turquoise rounds: Lima Beads, www.limabeads.com. Ceramic rounds: Gaea Handmade, gaea.indiemade.com. Flower coin charms: Niki Passenier, nikipassenier@gmail.com.
3. Designed by Julie Vargas. Teardrops and ear wires: Dragon Findings (wholesale only), (520) 882-4177, www.dragonfindings.com. Hammered connectors: Trinity Brass Co. (wholesale only), (209) 848-5544, www.trinitybrassco.com.
4. Designed by Gaea Cannaday. Faceted rounds: Gaea Handmade, gaea.indiemade.com. Leaf charms: Gaea, (805) 640-8989, www.gaea.cc.
5. Designed by Debbie Blair. Earring findings: Ezel Findings, (800) 977-9904, www.ezelfindings.com. Wood rounds: Beads & Honey, www.beadsandhoney.com. Dyed wood rondelles: Silk Road Treasures, (847) 918-1066, www.silkroadtreasures.com. Ceramic cubes: Ornamentea, (919) 834-6260, www.ornamentea.com. Wood flower charms: Fire Mountain Gems and Beads, (800) 355-2137, www.firemountaingems.com. Similar patinated head pins: Supply Your Soul, www.supplyyoursoul.etsy.com.
6. Designed by Lavon Peters. Seed beads: Beyond Beadery, (800) 840-5548, www.beyondbeadery.com. Swarovski crystal pearls: Artbeads.com, (866) 715-2323. Wood rounds: Beads & Honey, www.beadsandhoney.com. Ceramic lentils: Golem Design Studio, www.golemstudio.com.
7. Designed by Kimberly Biery. Pink shell rondelles: Michaels, (800) 642-4235, www.michaels.com. Lampwork rondelles: Fresh Baked Beads, www.freshbakedbeads.etsy.com. Leaf charms and circle links: Bead Paradise, (440) 775-2233, www.beadparadise.com.

8. Designed by Michelle McCarthy. Ceramic flowers and leaves: Firefly Design Studio, www.fireflydesignstudio.etsy.com. Ear wires: Cherry Tree Beads, (828) 505-2328, www.cherrytreebeads.com. Wire: ParaWire, (973) 672-0500, www.parawire.com.
9. Designed by Andria McKee. Hamsa charms: Kristi Bowman Design, www.kristibowmandesign.com. Ear wires: Orrtec, www.orrtec.etsy.com.
10. Designed by Andria McKee. Faceted rounds: Michaels, (800) 642-4235, www.michaels.com. Petal beads: Beads and Babble, www.beadsandbabble.etsy.com. Hoops: Detach Destash Shoppe, www.detachdestashshoppe.etsy.com.
11. Designed by Michelle McEnroe. Pressed-glass rounds: The Bead Apothecary, www.thebeadapothecary.etsy.com. Emerald nuggets: Lima Beads, www.limabeads.com. Twisted rectangles: Bonkers for Beads, www.bonkersforbeads.etsy.com. Bellflowers: Beads and More by Yashma, www.beadsandmorebyyashma.etsy.com. Sunflower charms: Scorched Earth on Etsy, www.scorchedearthonetsy.etsy.com.
12. Designed by Stephanie LaRosa. Pressed-glass flowers and leaves: Lima Beads, www.limabeads.com. All other materials: Hobby Lobby, (800) 888-0321, www.hobbylobby.com.
13. Designed by Loralee Kolton. Dagger charms: Inviciti, www.inviciti.etsy.com. Ribbed rounds: Komponenten, www.komponenten.etsy.com. Wire: Artwear Elements, www.artwearelements.etsy.com. All other materials: Fire Mountain Gems and Beads, (800) 355-2137, www.firemountaingems.com.
14. Designed by Andria McKee. Enameled rectangles: Blue Hare Art Wear, www.bluehareartwear.etsy.com. Faceted rounds: Michaels, (800) 642-4235, www.michaels.com.
- Copper rounds: Jo-Ann Fabric and Craft, (888) 739-4120, www.joann.com. Copper rings: Olay's Jewelry Making Supply Store, www.olay.etsy.com. Ear wires: Orrtec, www.orrtec.etsy.com.
15. Designed by Andria McKee. Similar faceted rondelles: Fabulous Rocks, www.fabulousrocks.etsy.com. The Lipstick Ranch dragonfly charms: Lima Beads, www.limabeads.com. Bead caps: Michaels, (800) 642-4235, www.michaels.com.
16. Designed by Sharyl McMillian-Nelson. Triangle beads: My Supplies Source, www.mysuppliesource.etsy.com. Teal lampwork rounds: Genea Beads, www.genea.etsy.com. Bimini lampwork rondelles: Naos Glass and Jewelry Supply, www.naosglass.etsy.com. Patina spacers: Gypsy Bead Peddler, www.gypsybeadpeddler.etsy.com. Similar patina charms: Metapolies, www.metapolies.etsy.com. Ribbon: Goldenonetoo, www.goldenonetoo.etsy.com. Wire: TJ's Wire Warehouse & Findings, www.tjswirewarehouse.etsy.com.
17. Designed by Andria McKee. Rondelles: Michaels, (800) 642-4235, www.michaels.com. Ceramic drops: Shaterra Clay Studio, www.shaterra.etsy.com. Bead caps: Beads 4 All, www.beads4all.etsy.com. Ear wires: Patina Queen, www.patinaqueen.com.
18. Designed by Loralee Kolton. Gold faceted rondelles: Fire Mountain Gems and Beads, (800) 355-2137, www.firemountaingems.com. Green faceted rondelles: Gathering Splendor, www.gatheringsplendor.etsy.com. Decorative glass bars: New Moon Design, www.newmoondesign.etsy.com. Gold teardrops: Elegant Dreams, www.elegantdreams.etsy.com. Eye charms: Inviciti, www.inviciti.etsy.com. Fan charms: Gemme Tresor, www.gemmetresor.etsy.com. Ear wires: Lima Beads, www.limabeads.com.
19. Designed by Rejetta Sellers. Pressed-glass flowers and cut-out rectangles: Lima Beads, www.limabeads.com. Ceramic teardrops: Scorched Earth on Etsy, www.scorchedearthonetsy.etsy.com. Ear wires: Patina Queen, www.patinaqueen.com.
20. Designed by Lisa Marie Baldock. Seed beads: Art Jewelry Beads 'n More, www.artjewelrybeadsnmore.etsy.com. Faceted rondelles and flowers: The Curious Bead Shop, www.thecuriousbeadshop.etsy.com. Oval charms: Inviciti, www.inviciti.etsy.com. Wire: Ali C's Supply Shop, www.alicsupplyshop.etsy.com.
21. Designed by Gaea Cannaday. Copper rings: Gaea, (805) 640-8989, www.gaea.cc. Ceramic coin charms: Gaea Handmade, www.gaea.indiemade.com.
22. Designed by Megan Lenhausen. Fire-polished rounds and crystal drop: FusionBeads.com, (888) 781-3559. Chain: Michaels, (800) 642-4235, www.michaels.com.
23. Designed by Michelle McEnroe. Rondelles: Beads Direct, (704) 568-3567, www.beadsdirectonline.com. Bellflowers: Bobbi's This N That, www.bobbithisnthat.etsy.com. Pinched rounds: Arte Bella Surplus, www.artbellasurplus.etsy.com. Ceramic rectangles: Something to do Beads, www.somethingtodobeads.etsy.com. Brass rounds, daisy bead caps, and ear wires: Fallen Angel Brass, www.fallenangelbrass.etsy.com. Chain: Beadaholique, (866) 834-4618, www.beadaholique.com.
24. Designed by Andria McKee. Rondelles: Happy Mango Beads, (970) 532-2546, www.happymangobeads.com. Hammered brass rings: Gemme Tresor, www.gemmetresor.etsy.com. Ear wires: Patina Queen, www.patinaqueen.com. All other materials: Michaels, (800) 642-4235, www.michaels.com.

* THE BEADING CONNECTION *

BEADS & FINDINGS

A BIT OF STONE BEADS

www.abosbeads.etsy.com
At A Bit of Stone Beads, you will find a wide selection of gemstone beads for your jewelry making projects. New beads are added weekly, so please check back often. We strive to offer competitive prices and fast delivery!

A GRAIN OF SAND

www.agrainofsand.com
(704) 660-3125
Unique collection of beads & findings

ARTBEADS.COM

www.artbeads.com
(866) 715-2323

BEAD WORLD (IL)

www.beadworldbeads.com
(847) 766-2323
Shop online! All new Website!

CHARM FACTORY

www.charmfactory.com
(866) 867-5266
Custom charms and jewelry tags

FIRE MOUNTAIN GEMS

www.firemountaingems.com
(800) 355-2137

FUSION BEADS

www.FusionBeads.com
(888) 781-3559
Fusion Beads is where your jewelry begins. We offer over 45,000 beads & supplies, hundreds of step-by-step techniques & over 1700 FREE Inspiration project designs. Unleash your creativity & come bead with us! FREE US SHIPPING!

LIMA BEADS

www.limabeads.com
(734) 929-9208

MERCHANTS OVERSEAS INC.

www.merchantsoverseas.com
sales@merchantsoverseas.com
(800) 333-4144

BEADS & FINDINGS SUPPLIES

BEADALON

www.beadalon.com
(866) 423-2325

SOFT FLEX CO.

www.softflexcompany.com
(866) 925-3539

KITS & MORE

JUBILI BEADS & YARNS

www.jubilibeadsandyarns.com
(856) 858-7844

SHOWS

Bead Fest Spring
Philadelphia, PA
April 7-10, 2016

Bead Fest Summer
Philadelphia, PA
August 17-21, 2016

Bead Fest Fall
Tacoma, WA
October 13-16, 2016

Chat with Successful Jewelry Artists



NAME: CATHLEEN MCCARTHY
 BUSINESS: THE JEWELRY LOUPE
 WEBSITE: WWW.THEJEWELRYLOUPE.COM

Using Pinterest to Promote Your Jewelry Business with Cathleen McCarthy

Q: When did you start using Pinterest?

A: I became aware of Pinterest soon after it launched in March 2010, a few months after I started my blog. I was posting a lot, trying to build traffic, and obsessively checking my stats on Google Analytics. “Pinterest” kept showing up, and it was climbing higher every time I checked, sending more and more traffic to my site.

Q: How many followers do you have?

A: I was late to the Pinterest game and have never been a prolific pinner. I have more than 400 followers on my Pinterest boards, which is nothing compared with some jewelry pinners I follow. However, Pinterest is my #1 source of social media traffic—although I suspect this has less to do with my own pinning than with what other people pin from my blog. Some of those images have gone viral, thanks to pinners with tens of thousands of followers.

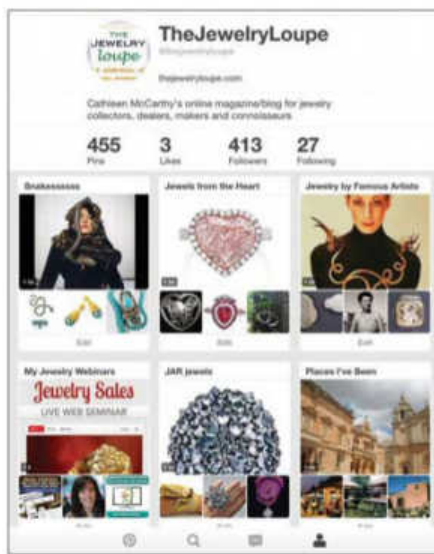
Q: What do people love about Pinterest?

A: It’s a social bookmarking site for the visually oriented—you don’t have to write a word to pin a photo. Pinterest was designed to bookmark a Web page for future reference by saving a compelling photo from that page. This means someone can click on a pinned photo and land on the originally bookmarked page. So if an image from your site or online shop goes viral, you might have hundreds or even thousands of visual doors leading to your product page.

A photo that went viral on Pinterest from The Jewelry Loupe website



SPRIES JEWELRY DESIGN, WWW.SPRIESJEWELRYDESIGN.COM



The Jewelry Loupe’s Pinterest page on a mobile device

Q: What’s the easiest way to increase your number of Pinterest followers?

A: By pinning like a maniac. Becky Cole, another jewelry blogger I know, has 27,600 Pinterest followers—but she has also pinned more than 35,000 images to 143 boards! However, your ultimate goal should be to increase the number of pins from your site. The easiest way to do this is to post irresistible images of your jewelry online. Also, be sure to tag and title your images so they lead back to your site—which I discuss in my Pinterest webinar.

Q: What makes a pin go “viral”?

A: A jewelry photo that goes viral on Pinterest is typically a fabulous and unique piece of jewelry photographed in a compelling way. Sometimes it’s a look that’s “trending” on Pinterest, much like in fashion. You either have your finger on the pulse, or you get lucky.

Q: How do you turn Pinterest followers into customers?

A: Engage with them. Follow them, follow their boards, and repin their pins. Better yet, comment on their pins. Nobody ever comments, so you really notice if someone does. If you notice someone pinning your jewelry regularly, especially to a “wish list” board, reach out. You can just thank them for their interest, or you can make them an offer, such as a discount.

Q: If you’re using Pinterest successfully, can you ignore other social media?

A: I strongly advise against choosing one social media platform and ignoring the rest, even if you’re killing it on one platform. Not everyone you want to reach is on Pinterest (or Facebook, Twitter, Instagram, etc.). These platforms work best as part of an overall strategy, which I discuss in my social media webinar.

Q: Are there any Pinterest no-no’s?

A: Don’t pull images off a site to pin, which cuts off the flow of traffic to the source. If you’re pinning someone else’s photography, don’t delete the credit.

For More Pinterest Tips

For even more valuable information about how to turn Pinterest into a profitable tool for your jewelry business, download Cathleen’s on-demand Web seminars *Use Pinterest to Boost Your Jewelry Sales*, at www.bit.ly/pinterest-jewelry-sales, and *Social Strategy: How to Build Your Jewelry Brand with Social Media*, at www.bit.ly/social-media-jewelry-branding.



spring

GREATER PHILLY EXPO CENTER /
Oaks, PA

WORKSHOPS / April 7-10, 2016

EXPO / April 8-10, 2016

Indulge

**your love of jewelry making
in a three-day getaway to
Philadelphia this spring!**

The most renowned jewelry-artists working today are bringing their skills and enthusiasm to Bead Fest Spring—celebrating its 10th Anniversary in 2016.

Choose from hundreds of hands-on workshops and build your skills while having an unforgettable time! Flexible education sessions mean you build the experience you want, when you want.

Longtime jewelry-makers and first-timers welcome.

The perfect workshop is waiting for you—

register now!

BeadFest.com

Be the first to hear about new workshops
and instructors—follow us on:



**Enjoy FREE Expo entry with
any Workshop purchase!**



Swarovski® crystals
at low wholesale prices
www.firemountaingems.com

FIRE MOUNTAIN
GEMS and Beads®
"Friendly Service" Since 1973

www.firemountaingems.com

One Fire Mountain Way, DEPT C013
Grants Pass, OR 97526-2373
1-800-355-2137

America's Favorite Beading and Jewelry Supply Company®

Go online to see over 120,000 HOT
jewelry-making products and order
a **Free** catalog today

You supply the
creativity,
we supply
everything
else!®

Clay Blade



Fire Mountain Gems
and Beads© 2016

Guzialia Reed, OH
www.guzialiareed.com
Bronze Medal Prize Winner,
2015 Creative Clays Jewelry-
Making Contest

SWAROVSKI
AUTHORIZED RESELLER